

# Work Inspired

Enabling business success by creating workspaces people love



**HAWORTH**  
A Best in Class Dealer



Proud to be 100%  
Employee-Owned





# The BOS Difference

## Your experience made better because of ours

We know that refreshing your workspace is an important investment, and having furnished thousands of workspaces, the BOS team is uniquely qualified to make your experience the easiest it can be. BOS will guide you every step of the way and for years to come.

### Easy Buying Experience

Change made easy through customer portals, procurement options & powerful project reporting.

### Invest with Confidence

Clear and understandable options. Live Design. Industries best warranties. Purchase with confidence through deep discounting from 350+ leading manufacturers

### Operational Excellence Leader

Trust an experienced team with over seven decades furnishing thousands of workspaces and a proven ability to complete project on time and on budget.

### Work with Employee Owners Every Step of the Way

Your experienced team will be supported by our entire organization. No one cares more about your success.

### Unique & Valuable Market Insights

Receive unparalleled access to exclusive research, knowledge and tools.



# The BOS Story

A legacy of operational excellence, ownership and delivering flawless workspaces on time and under budget.

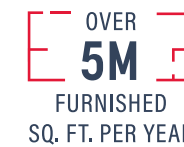


Founded in 1948, BOS was the **world's first Haworth Dealer** and remains one of their top dealers globally over seven decades later.

Headquartered in Roselle, IL, BOS Holdings also has inspiration centers, offices and warehouses in Chicago, Madison, Milwaukee, Orlando and Tampa. We have **furnished thousands of workspaces** throughout North America.



We are proud to be a **100% employee owned ESOP organization** since 2012. Over 1/3 of our team members are degreed Interior Designers! BOS is a Small Business Enterprise (SMB)



From design to decommissioning, demountable walls to union and non-union install, project management to digital workplaces, **BOS does almost everything in-house to minimize risk and maximize value.** We call this the 360° experience.

Leverage the **deepest discounting** from 350 of the industry's top manufacturers.



**Cutting-edge technology** powers the comprehensive BOS proACT Process. Leverage space visualization tools, live design, customer portals, workplace discovery solutions and more for your workplace project.

# Proud To Be 100% Employee Owned

As a 100% employee owned ESOP organization, no one cares more about your project. Work with an employee owner at every step of the move and procurement process. Mitigate risk and maximize efficiency. We've got your back.

## ESOP Companies...

- **Grow more than 5% faster (Harvard Business Review)**
- **Are 4-5% More Productive (National Center for Employee Ownership)**
- **Have 25% Higher Job Growth (National Center for Employee Ownership)**
- **Are up to 14% More Profitable (Rutgers)**
- **Are 3-4 Time More likely to Retain Talent (Employee Owner Foundation)**

---

Our employee owners look forward to working for you.





# Members of the BOS Holdings Family



Having created thousands of inspiring workspaces for clients in corporate, government, higher education, healthcare, and hospitality, BOS is a Best in Class, Haworth Preferred Dealer with showrooms, offices and warehouses in Chicagoland, Orlando and Tampa, FL.



AOI offers the Midwest's largest inventory of new, used, and remanufactured office furniture, with an emphasis on Haworth furniture. AOI provides decommissioning, recycling and/or resale of BOS clients' pre-owned furniture. Offices and warehouses in Chicagoland, Milwaukee, and Madison..



Workspace Digital – a division of BOS – is the first full-service technology integrator and digital marketing agency in the commercial interiors industry.



Apex Interior Services is a leading Union office furniture installation firm. In addition to furniture installation, Apex does custom applications for cabinetry, trim work and creative interior elements that blend with the architecture of the space.



If you can conceive it, CSS can get it done. From that simple name-plate to the sign on top of your building, Corporate Sign Systems has you covered! As a one stop shop for ultimate control, signage continuity and global capability, CSS can get it done.



**LEARN ABOUT THE BOS HOLDINGS FAMILY**

[www.bos-holdings.com](http://www.bos-holdings.com)

# We Lower Your Risk By Doing Everything In House

**360°  
EXPERIENCE**

Only the employee owners at BOS can deliver a true 360° experience



## Furnishings

- New, Used, & Refurbished
- 350+ Manufacturers
- Volume Discounting
- Home Office Programs

▶ [LEARN MORE](#)

## Workspace Consultation

- Workspace Strategy
- Budget Analyses
- Furniture Standards
- Cohesive Environment

▶ [LEARN MORE](#)

## Furniture Specialists

- NCIDQ & LEED Professionals
- New Space Planning
- Office Reconfigurations
- Guaranteed Specs

▶ [LEARN MORE](#)

## Project Management

- Acknowledgement & Site Condition Reviews
- Timeline Management
- Product Orientation
- Punch-List Resolution

## Installation Services

- Union & Non-Union
- Professional Carpentry
- Multi-Manufacturer
- Architectural Solutions

▶ [LEARN MORE](#)

## Decommissioning & Trade-In

- Fleet of Trucks
- Decommissioning Specialists
- Resale & Blending Capabilities
- Trade-In Opportunities

▶ [LEARN MORE](#)

## Leasing & Rental

- Short & Long Term Rentals
- Rent-to-Own Options
- Fair Market Price
- Haworth Payment Solution Leasing Program

## Asset Management

- Asset Appraisals
- Inventory Management
- Warranty Management
- Product Maintenance
- Bar-Coding

## Warehousing

- 150,000 SFT Facility
- Climate Controlled
- Delivery & Receiving
- Long & Short-Term Storage

▶ [LEARN MORE](#)

## Walls

- Walls Strategy & Consultation
- Dedicated Walls Team
- New Installations & Reconfigurations
- Manufactured in USA

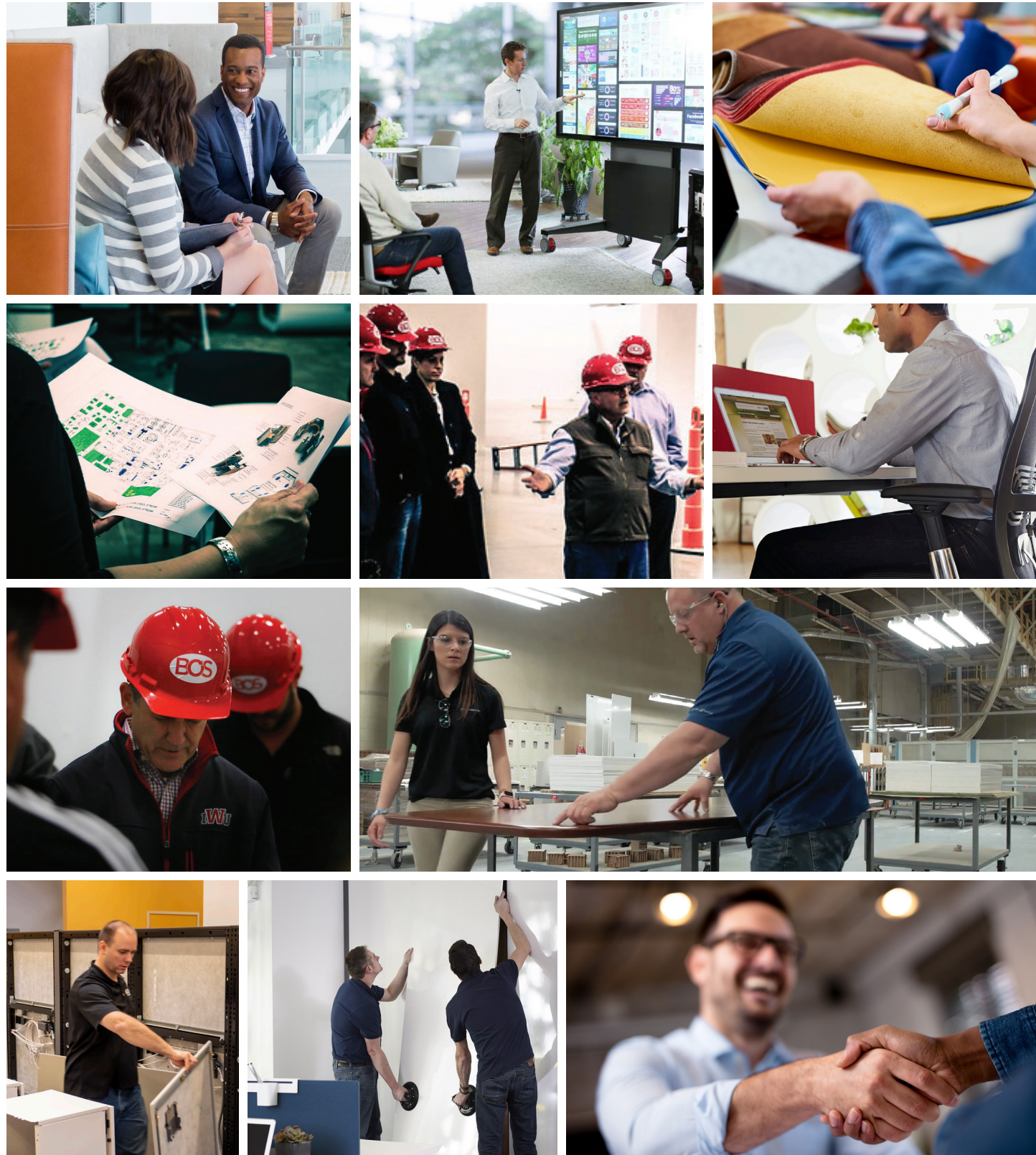
## Technology Integration

- Audio Visual Solutions
- Sound Masking
- Digital Space Planning
- Sensors
- Collaboration Technology

▶ [LEARN MORE](#)

## Culture & Change Communication

- Work Culture Discovery & Promotion
- Space Tours & Showcases
- Workspace Signage & Branding
- Digital Marketing Agency



# Path to Success



Combining people, technology, and process to deliver a successful integrated project deliverable.

**LEARN MORE ABOUT OUR PROCESS**

**1 Discover**  
 The journey begins by listening and learning about your company's needs and culture. This is also where we define project requirements, develop timelines, and set Service Level Expectations.

**FEATURED TECHNOLOGIES**  
 Compass Workspace Discovery, Freespace, Yulio

**2 Guide**  
 Next, we will be guiding you through the process of exploring layouts and furniture, often with the help of virtual renderings, 360° tours, and Design in Real Time.

**FEATURED TECHNOLOGIES**  
 Bluescape, Canvas, Sketchfab

**3 Prepare**  
 The 3rd step involves getting the space ready, confirming details such as building conditions, power locations, measurements, and zone tagging.

**FEATURED TECHNOLOGIES**  
 Smartsheet, PlanGrid

**4 Procure**  
 Now it's time to order the product. We'll review acknowledgements for accuracy and ship dates and give you real-time access to all order documents.

**FEATURED TECHNOLOGIES**  
 CORE Customer Portals, Service Dashboards

**5 Install**  
 After verifying accuracy of the product, the installation begins, accompanied by daily progress reports. Afterwards, trash is removed and – if applicable – old furniture is decommissioned.

**FEATURED TECHNOLOGIES**  
 LYNX, IMS, MOSS

**6 Serve**  
 The final step involves Day 2 site activation for product usage, warranty and maintenance programs, post occupancy surveys, custom customer portals with resources, eprocurement options, and more.

**FEATURED TECHNOLOGIES**  
 CEROS, VIP Portals, Private Custom Websites

**TEAM OWNERSHIP**

KEY CONTACT



PROJECT DESIGNER



PROJECT COORDINATOR



INSTALLATION TEAM



CUSTOMER SERVICE





# Customer Portal

## Everything At Your Fingertips

The tried and true BOS proACT process is now powered by the industry's most cutting edge technologies to make the move and procurement process faster, smarter and more effective than ever before.

**Real-time, instant access to proposals, active orders, service requests, invoicing, drawings, and data online and sent to your inbox so that you can stay in the know every step of the way.**

### ONLINE PORTAL

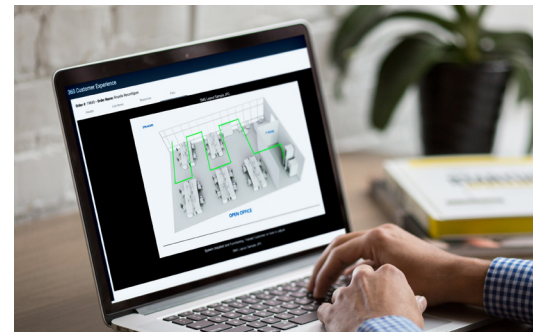
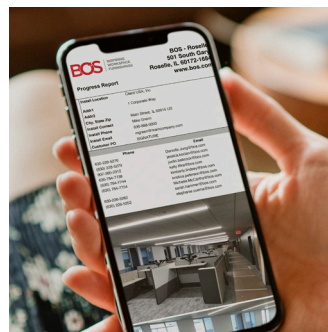
Everything in one place with live tracking and on demand access.

### PUNCHLIST RESOLUTION

A faster process that's easy and efficient to manage while eliminating human error.

### PROGRESS REPORTS

Recieve visual report updates sent straight from the job site to your email.



 **TAKE A TOUR**  
[www.bos.com/portal](http://www.bos.com/portal)

# Live Design

## Take Part In The Creation Of Your Workspace

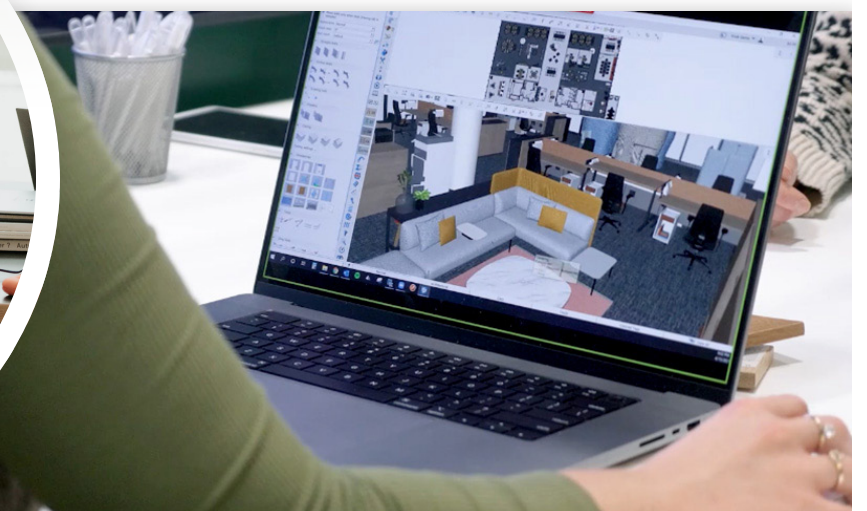
Industry-leading technology and the best designers in commercial interiors, Live Design by BOS offers speed, efficiency, confidence and savings in an immersive experience where clients and stakeholders collaborate in the space planning and furniture selection process with a design professional.

- Realistic 3D Space Visualization
- Save Weeks On Your Next Workspace
- Straight-Forward Product Pricing & Visibility
- Compare Styles, Colors & Options Instantly
- Informed Decisions In Real Time
- In-Person Or Remote Design Sessions



**DISCOVER LIVE DESIGN**

[www.bos.com/livedesign](http://www.bos.com/livedesign)



# Operational Excellence

On Time. On Budget. Exceeding Expectations.

Our goal is to create a high-performing workspace your team will love and to execute a flawless project that delights all stakeholders. As operational excellence leaders in the commercial interiors space, we earn the trust of our clients through exceptional performance, minimal punch list and accountable and resolution when challenges occur.

- We minimize risk by doing almost everything in-house by employee owners.
- Our size, experience and stability allows us to insulate your project from problems.
- Change management and risk mitigation plans in place for every project.
- Long-term, relationship-based approach founded in integrity and commitment to client.
- Tried and True proACT process powered by industry-leading technology.
- 200,000 Square Feet of warehouse and operations in IL
- In-House Installation, Walls, Technology, Delivery, Warehousing and Decommissioning



**LEARN MORE**  
[www.bos.com/operations](http://www.bos.com/operations)



# WORKSPACE DIGITAL

## Get Digital

In the modern workplace, digital spaces promote culture, productivity, attraction and retention. Workspace Digital is the first full-service technology integrator and digital marketing agency in the commercial interiors industry. Align your physical and digital spaces today.

### Tech

Leverage our full service technology integration capabilities and connect your spaces and teams with the right solutions for your business.

- *AV Consulting*
- *Asset Inventory*
- *Design & Engineering*
- *Video Conferencing*
- *Audio Solutions*
- *Wireless Charging*

### Agency

From consulting and training to project-based and fully-managed solutions, Workspace Digital offers a full range of brand, marketing & creative solutions.

- *Dynamic Websites*
- *Digital Signage*
- *Content Marketing*
- *Video & Photography*
- *Brand Identity*
- *And More*



**EXPLORE WORKSPACE DIGITAL**  
[www.workspace.digital](http://www.workspace.digital)



**LEARN MORE ABOUT  
THE BOS SUSTAINABILITY CYCLE**

[www.bos.com/about/sustainability/](http://www.bos.com/about/sustainability/)

**OUR APPROACH**

The BOS team works hard to be good environmental stewards. From helping our clients to create more sustainable spaces to our strong partnership with Haworth, the industry leader in LEED solutions, BOS is committed to offering greener products and services. We live this commitment daily by employing our own internal sustainability initiatives. These include recycling programs for paper and computers, consolidating our deliveries to be as efficient as possible, and building sustainability into our corporate mission. From our corporate policies to the lifestyle choices of our team, sustainability matters at BOS.

**OUR IMPACT**



**5,000+**

Workstations and Private Offices Diverted from Landfills Yearly

- 2.76 Million Pounds of Furniture
- 8 Million Pounds of Natural Resources Saved
- 7 Million Pounds of Co2 Waste Prevented from Entering the Earth's Atmosphere
- Energy Saved Could Power 1,056 American Homes for a year



**ALL**

Cardboard and White Paper Recycled



**500**

Tons of Metal Recycled Yearly



**NEW**

Product Packaging is Reused



**80%**

Used Furniture Brought into Our Warehouse is Sold

# We'll Take Care Of Your Existing Furniture

BOS In-House Decommissioning is part of our promise to deliver a 360° Experience, where you're provided maximum value and minimum risk through a turnkey solution that results in a complete, integrated project deliverable.

With a vast network of brokers, nationwide showrooms, and our new 200,000 square foot, climate-controlled warehouse in Roselle, IL, we can prevent most decommissioned furniture from going into a landfill.

- 200,000 Square Foot Climate Controlled Warehouse
- Fleet of Trucks in Illinois, Orlando and Tampa
- In-House Union and Non-Union Installation Teams
- Decommissioning Specialists On Staff
- Resale, Refurbishing and Blending Capabilities for Best Value
- BOS diverts between 4 and 5 thousand workstations or private offices (totalling over 1,380 tons) from landfills every year.



**LEARN ABOUT BOS DECOMMISSIONING**  
[www.bos.com/decommissioning](http://www.bos.com/decommissioning)



# Branding And Signage Solutions

## Enhance Your Workspace

BOS Holdings now offers in-hour corporate signage solutions that enhance your brand, culture, and workspace. Through Corporate Sign Systems, our expert designers, fabricators, and installers deliver tailored architectural signage and wayfinding solutions that are both functional and visually compelling.

From workplaces to public spaces, we create signage that strengthens identity, enhances navigation, and elevates the user experience. No matter the scale, we ensure seamless execution across North America—making every environment look exceptional down to the last detail.



LEARN MORE ABOUT  
CORPORATE SIGN SYSTEMS

[www.bos.com/signage/](http://www.bos.com/signage/)



# 350+ Top Manufacturing Partners

## Systems

**AIS**  
**Haworth**  
Innovant  
Tayco

## Accessories

**Claridge**  
Deflecto  
Doug Mockett  
Egan  
Magnuson Group  
Narbutas  
Peter Pepper  
Safco

## Casegoods

**AIS**  
Bernhardt  
Darran  
Gianni  
Global  
Groupe Lacasse  
Halcon  
**Haworth**  
Indiana Furniture  
**IOF**  
**JSI**  
Narbutas  
National  
Nucraft  
**OFS**  
Tuohy

## Walls

Haworth AI  
Haworth Enclose  
Haworth 4Space  
Haworth Trivati

## Conference & Training

**AIS**  
Bernhardt  
Coalesse  
Davis  
**Enwork**  
Encore  
Falcon  
Furniture Lab  
Global  
Groupe Lacasse  
Halcon  
**Haworth**  
HBF  
Indiana  
Furniture  
**JSI**  
KI  
Krug  
Narbutas  
National  
Nevers  
Nienkamper  
Nucraft  
**OFS**  
Safco  
Special T  
Surface Works  
Versteel

## Ergonomics

Ergotron  
Fellowes  
Humanscale  
Workrite

## Files & Storage

**AIS**  
Aurora  
DeskMakers  
Fireking  
Global  
**Great Openings**  
Groupe Lacasse  
**Haworth**  
Hollman Lockers  
Invincible  
KI  
Kwik File  
Narbutas  
Office Specialty  
REB  
Schwab  
Tennsco  
Virco

## Healthcare

Brayton  
**Carolina**  
Cabot Wrenn  
David Edward  
**Global**  
Group Lacasse  
**Haworth**  
High Point  
Intensa  
IoA  
KI  
Krug  
LaZBoy  
Nemschoff  
Neocase  
Softcare  
Stance  
Thonet  
Wieland  
Unicell

## Trading Furniture

Innovant  
Nova  
R&D Data Products

## Lounge & Seating

**9 to 5**  
**Allermuir**  
Bernhardt  
Brayton  
Cabot Wrenn  
Cassina  
Capellini  
Coalesse  
David Edward  
Davis  
EKO Encore  
Furniture Lab  
**Global**  
Halcon  
**Haworth**  
HBF  
Keilhauer  
**JSI**  
Krug  
Martin Bratrud  
National  
Narbutas  
**OFS**  
Poltrona Frau  
SitonIt  
Source  
International  
Stylex  
Thonet

## Sound Masking

Sound  
Management  
Group

## Lighting

Artemide  
**Haworth**  
Humanscale  
Light Corporation  
Luxo  
Nessen

## Task Seating

**AIS**  
**9 to 5**  
Allseating  
Global  
**Haworth**  
Keilhauer  
Krug  
National  
OFS  
Safco  
**Sit On It**  
Tayco  
United Chair  
Via  
Virco



## We Value Lasting Partnerships



*The BOS team could not have been a better partner for our space move. Their services and expertise are unmatched. We would highly recommend them to anyone looking for a new workspace."*

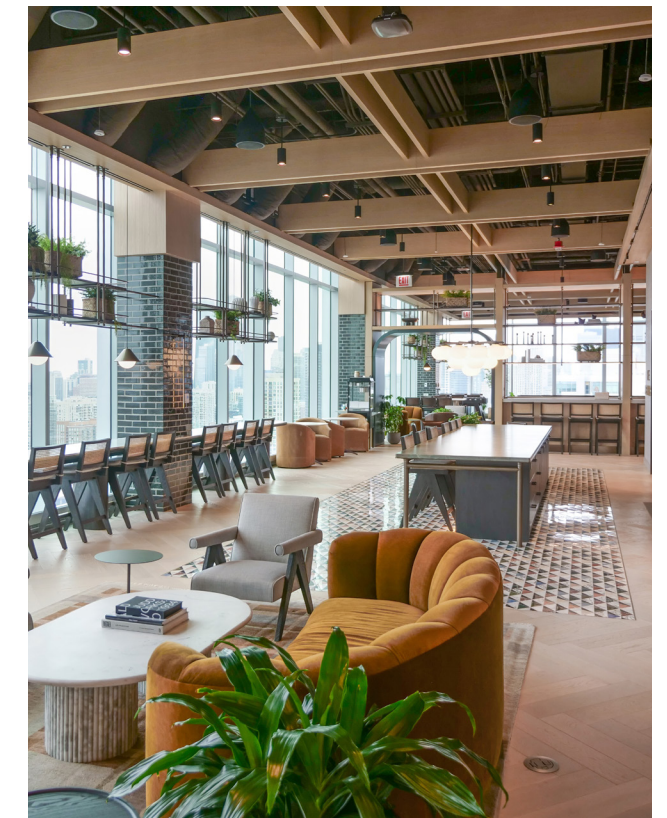
AREA VICE PRESIDENT // FORTUNE 500 COMPANY



Take video tours of BOS workspaces and hear from our satisfied clients.



**VISIT OUR SHOWCASE PAGE**  
[www.bos.com/showcase](http://www.bos.com/showcase)



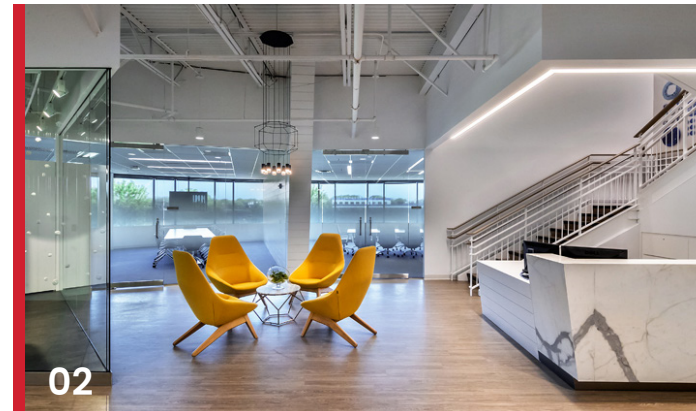
# We Value Lasting Partnerships

BOS creates long-term value by developing positive client relationships, many of which have lasted 15 years or longer.



# Recent work

- 01 HUSCH BLACKWELL**  
*Chicago, IL*
- 02 WILTON BRANDS**  
*Naperville, IL*
- 03 AUTOWEB**  
*St. Petersburg, FL*
- 04 MEDLINE**  
*Northfield, IL*
- 05 ULTA BEAUTY**  
*Bolingbrook, IL*
- 06 SUNCOAST CREDIT UNION**  
*Orlando, FL*
- 07 CENTAURI INSURANCE**  
*Lakewood Ranch, FL*
- 08 ACCESSO**  
*Orlando, FL*
- 09 THE MERCHANDISE MART**  
*Chicago, IL*
- 10 DELIVERHEALTH**  
*Clearwater, FL*
- 11 PEAPOD**  
*Chicago, IL*
- 12 HONEYWELL AEROSPACE**  
*Clearwater, FL*



Take video tours of BOS workspaces and hear from our satisfied clients.

 **VISIT OUR SHOWCASE PAGE**  
[www.bos.com/showcase](http://www.bos.com/showcase)



INSPIRING  
WORKSPACE  
FURNISHINGS


**HAWORTH**  
A Best in Class Dealer



Proud to be 100%  
Employee-Owned

Be Inspired at [bos.com](https://bos.com)

CONTACT US | 407.805.9911 | [info@bos.com](mailto:info@bos.com)

 BOSworkspaces

 BOSworkspaces

 BOSworkspaces

 BOSworkspaces

**BOS ORLANDO**

200 Technology Park  
Lake Mary, FL 32746  
407.805.9911

**BOS TAMPA**

1600 East Eighth Ave, Ste C-201  
Tampa, FL 33605  
813.549.7310

**ROSELLE HEADQUARTERS**

501 South Gary Avenue  
Roselle, IL 60172  
877.267.0267

**CHICAGO SHOWROOM**

325 North Wells St, Ste 110  
Chicago, IL 60654  
312.670.8530

ORLANDO | TAMPA | ROSELLE | CHICAGO | MILWAUKEE | MADISON