

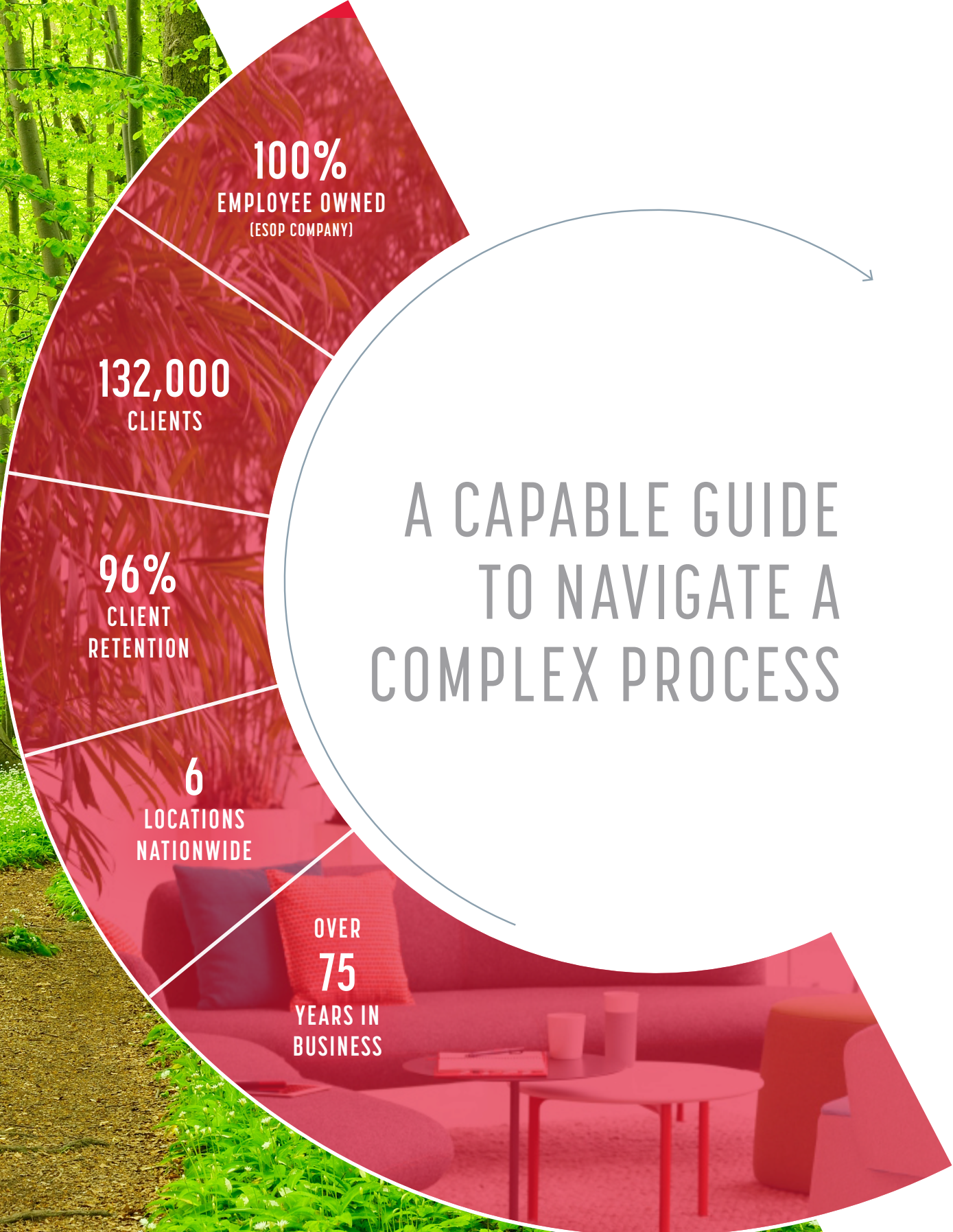


# SPACE INSPIRED

**BOS**

INSPIRING  
WORKSPACE  
FURNISHINGS

[www.bos.com](http://www.bos.com)



## A CAPABLE GUIDE TO NAVIGATE A COMPLEX PROCESS

**100%**  
EMPLOYEE OWNED  
(ESOP COMPANY)

**132,000**  
CLIENTS

**96%**  
CLIENT  
RETENTION

**6**  
LOCATIONS  
NATIONWIDE

**OVER  
75**  
YEARS IN  
BUSINESS



### BOS MAKES WORKSPACE CHANGE EASIER.

We know your workspace is an important investment in your people, culture, & future. Trust BOS to guide you down the path that's right for your organization.

- BOS was the world's 1st Haworth dealer and consistently receives the rare "Best in Class" distinction.
- Over 45% of the BOS staff are degreed interior designers.
- Unmatched buying power & preferred pricing from over 350 of the world's top workspace manufacturers.
- BOS is 100% employee-owned, so you will work with an owner from start to finish.

**BOS**

**HAWORTH**  
A Best in Class Dealer



PROUD TO BE  
**100%**  
EMPLOYEE  
OWNED

# Medline

Corporate Headquarters - Northfield, IL

PbD & MB Real Estate

386,266 square feet

Haworth, ICF, Stylex, Nienkamper, Halcon

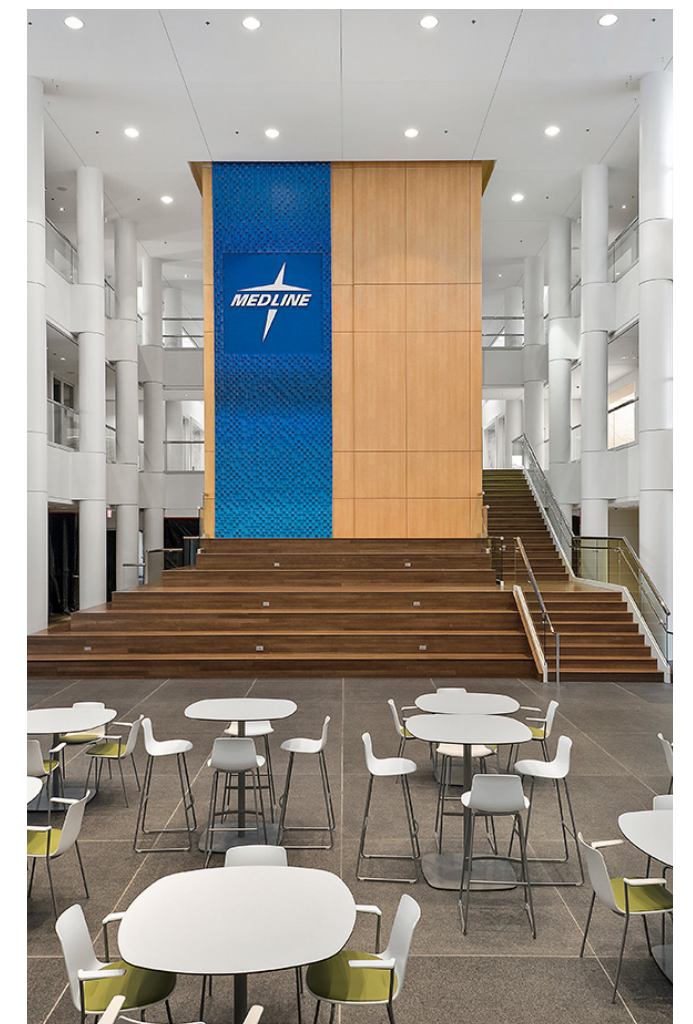
BOS worked closely with Medline to transform an existing building into a state-of-art facility providing a workspace that is invigorating and vibrant with 1464 workstations, 227 private offices and 11 director offices.

Medline is the largest privately held manufacturer and distributor of medical supplies uniquely positioned to provide products, education and support across the continuum of care. Their ability to bring best practices from one care setting to another — from large healthcare systems and independent physician practices to home health patients and their families, is what sets them apart.



*The BOS team could not have been a better partner for our space move. Their services and expertise are unmatched. We would highly recommend them to anyone looking for a new workspace."*

**MEDLINE**





# Ulta

Corporate Headquarters - Bolingbrook, IL

IA & Titan CM Solutions

200,000 square feet

Haworth

BOS partnered with Ulta Beauty to renovate their corporate headquarters in Bolingbrook, IL. The 200,000 Square Foot facility featured Satellite Reception, Multipurpose Rooms, Conference Rooms, Huddle Rooms, Cafe and standard office space.

Ulta Beauty, Inc. is a beauty retailer of cosmetics, fragrance, skin care products, hair care products, and salon services. It engages its products and services in retail stores, salon services, and e-commerce.

“.....  
*Ulta Beauty has been working with the BOS and Haworth teams for over 10 years... BOS and Haworth play a critical role in the evolution of our corporate offices, focused on the common goal of developing our space into the guest-centric corporate headquarters that looks and feels fresh, fun and real and accurately represents our high-performance-driven culture and the Ulta Beauty brand.”*

**JAMIE MCLAREN, ULTA**



# iQor

Corporate Headquarters - St. Petersburg, FL

Mason Blau and Associates, MLE Designs, Inc.,  
iConstructors, Lotus Design, RiMO Photo

30,000 square feet

Haworth, OFS, Sit On It, Allermuir, Ideon

iQor planned a move from New York City to downtown St. Petersburg for their headquarters and engaged our team and Haworth to outfit their space. The project design team's goals were to create an open, inspiring workspace that fostered collaboration between their three floors and allowed for innovation in their rapidly changing business.

Within three months, the iQor team moved into a space using a completely modular system in Haworth's Integrated Palette, with forethought given to finish selections across the floors. Since then the space has already undergone one large reconfiguration over a long weekend – without needing any additional parts to complete.



# Vortex Optics

Corporate Headquarters - Barneveld, WI

Zingg Design & Hoff Construction

250,000 square feet

AIS Matrix workstations and offices, OFS private offices, HumanScale, JSI, OFS Brands, Urban Evolutions, Global & Claridge

Vortex Optics hired BOS Holdings early in the building design process to assist with design decisions and coordinate furniture choices and finish selections, integrating them into the design of the building. BOS Holdings installed all of the furniture in the space. The highlight of the space is the showroom that BOS Holdings designed, utilizing reclaimed wood materials to create the outdoor/lodge feel that they requested with an updated twist. We custom designed a 6,000 pound ceiling timber beam structure with 8x8 timbers sourced locally from Wisconsin. The "V" pattern with lighting gives a nod to the Vortex logo. All of the display cabinets and apparel displays were custom designed with reclaimed materials and metals, and have burnt in Vortex logos. From the antler chandelier over the fireplace wall to the custom coffee bar, this space gives a huge wow factor.

“.....  
I was really impressed with the level of service we received from BOS Holdings and Jessica in particular. Jessica was always friendly, prepared, and very attentive to our changing needs and ultimately came through when we needed it. I would highly recommend BOS Holdings and Jessica to anyone looking to transform a new or existing office space.”

**JOE HAMILTON, OWNER, VORTEX OPTICS**



# Schneider Electric

Nashville Hub - Nashville, TN

Gresham, Smith & Partners, MG Design, Tac Roberts

140,000 square feet

Haworth, OFS Brands, Dauphin

Since 1986, BOS started working with Square D Company in Palatine, IL. Since then, BOS has facilitated the furniture installations for Schneider Electric acquired companies throughout the US, Canada and Mexico. BOS and Schneider Electric have a standing relationship throughout a national reach, working successfully for over 26 years. Featured in this showcase is their updated Nashville, Tennessee office.

Schneider Electric is a leader in energy management and automation systems in homes, buildings, data centers, infrastructure and industries, with global presence in over 100 countries.



*The BOS Team has been servicing our needs from new projects, to reconfigurations, redeployment of our own products and service work, no matter how large or how small, BOS always makes our needs a high priority.”*

SCHNEIDER ELECTRIC



# Autoweb

Tampa, FL

Create+Co, Rubicon, Photos by Seamus Payne

12,000 square feet

Haworth, Haworth Collection, Andreu World, HBF, Global, Davis



When Autoweb decided to move from the suburbs to an iconic downtown Tampa building, Rivergate Tower, they envisioned a workspace that reflected their brand and culture. As a leader of technology in the automobile business, their executives wanted to ensure the new space was strong on place identity and would align with their strategic goals for innovation in their industry. Our team worked closely with the interior design team of Create+Co to maximize the potential of this workplace within this split-level suite with riverfront and park views.

A generous number of collaborative settings with a residential feel were provided that were identifiable and welcoming to workers. The open feel and low separations reinforce Autoweb's collaborative workstyle. The use of Haworth Collection, a major supplier of leather to luxury car brands like Ferrari and Lamborghini, as well as luxury interior furnishings, stylishly closed the loop on the connection between their space and culture.



# Featured Law Firm

Chicago Office - Chicago, IL

Hines, DRI, Gensler, Clune Construction

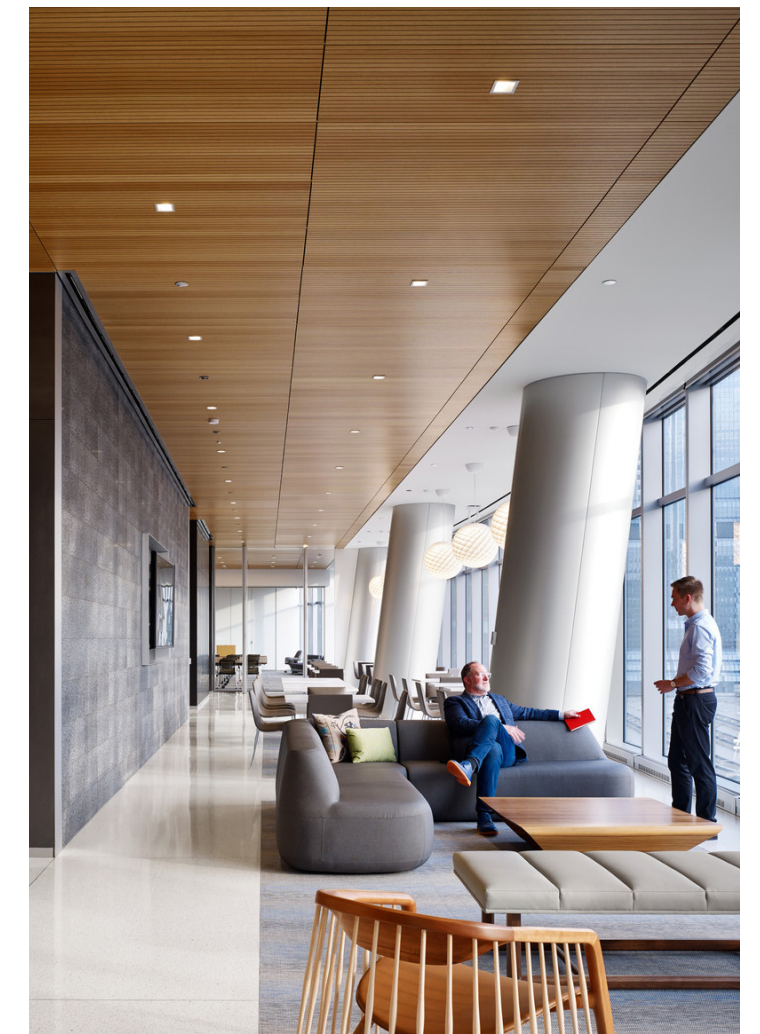
200,000 square feet

Halcon offices & conference tables, Wilkhahn seating

BOS partnered with a law firm to create a workspace encompassing ancillary furniture and Partner offices over 7 floors in Chicago's premier new construction high-rise on the Chicago River. Photo Credit: Steve Hall © Hall+Merrick.

The scope includes lounges on each floor and full amenity floor for reception, conference, training and dining with a variety of imported European designer furniture.

The client is a global law firm with lawyers located in more than 40 countries throughout the Americas, Europe, the Middle East, Africa and Asia Pacific, strategically positioned to help their clients with legal needs. Typical clientele range from multinational, Global 1000, and Fortune 500 enterprises to emerging companies developing industry-leading technologies.



# Metrohm

US Headquarters - Riverview, FL

HTG Architects, iConstructors, RiMO Photo

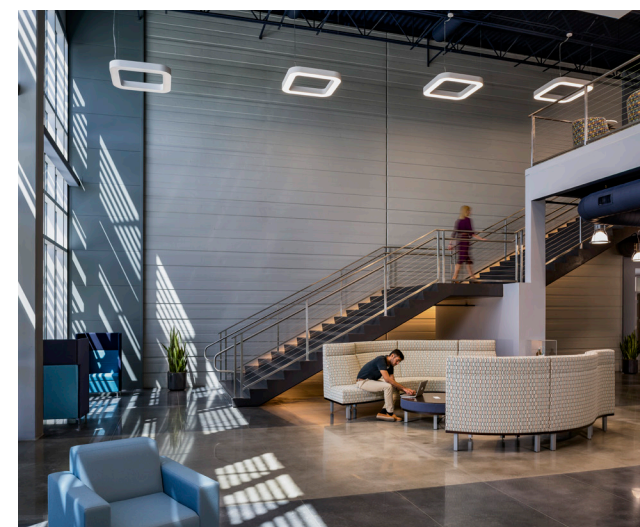
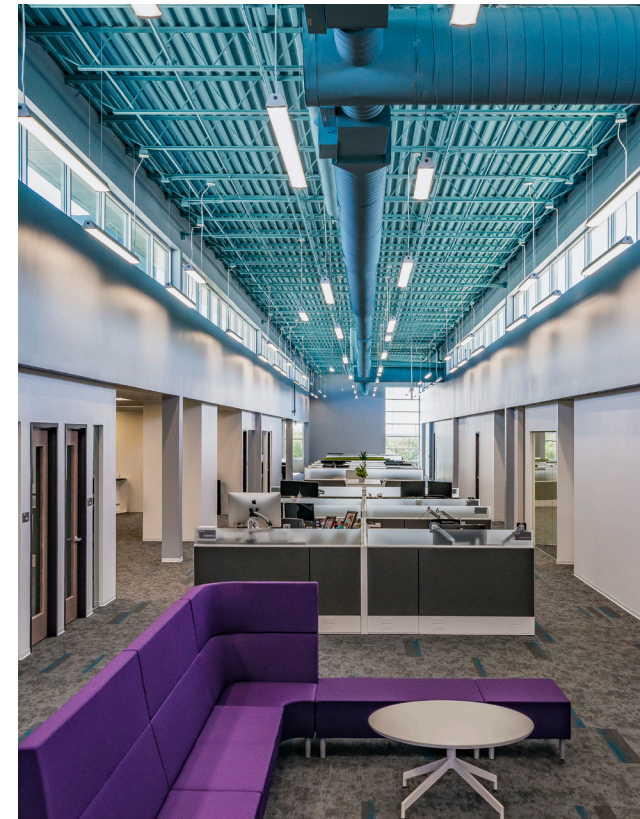
65,000 square feet

Haworth, JSI, Global, ERG

As a global manufacturer of laboratory instruments for chemical analysis, Metrohm USA wanted to ensure their new Riverview facility encouraged future growth and innovation, while staying true to their brand and unique office culture. A group of employees from many departments used the knowledge shared by Haworth and our team to create a design which facilitates collaboration in their new workspace.

One of the strategies for supporting employees was to focus on the needs of each department, and personas were created that informed all the design decisions. The strategy included using one standard workstation size from a kit of parts, but then customizing each department's layout and features to fit those team's workstyle. In addition, the project team embraced the idea of managing this change by involving the entire office in the process. Their marketing team created videos with executives and scheduled tours during construction to share the progress with everyone.

By applying these strategies and involving their team throughout the process, Metrohm USA has created a facility that will allow them to adapt to change in the future and to continue to lead their industry.



# Peapod

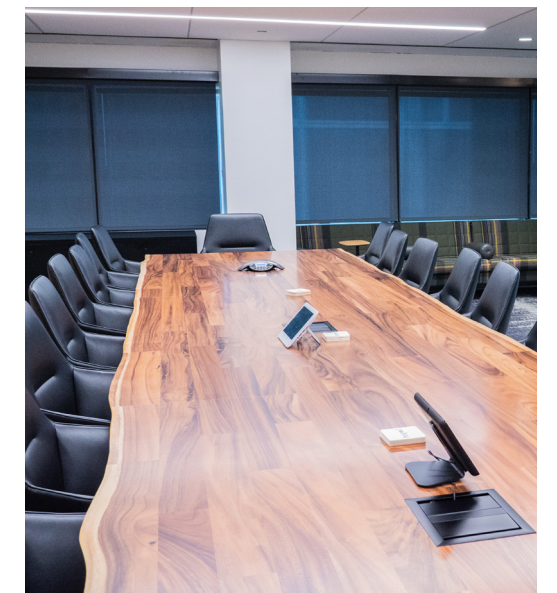
Headquarters - Chicago, IL

Partners by Design, Reed Construction, Colliers, CBRE

53,000 square feet

Haworth Workstations, Task Seating and Walls

Peapod's goal was to pull together several local suburban offices to create a centralized corporate headquarters in the city. This project was fast-paced and on a very tight budget. BOS assisted the client and their designer to find the right mix of product to achieve their functional, aesthetic and financial goals.



# Booking.com

Salt Lake City, UT

HOK Tampa, Photos by Seamus Payne

6,000 square feet

Haworth, OFS, Allermuir/Senator, Great Openings, Source International, JSI, ERG, Magnuson Group, Watson

Booking.com has a mission to empower people to experience the world. For the renovation of their Salt Lake City office, the project team worked together to create unique experiences within their open workspace and collaboration zones.

The unifying features of the wood walls, along with graphics and local photography, helped to drive the design intent of the furniture and fabrics. From the shared collaborative area with beautiful mountain views, to conference rooms designed around National Park images taken by their employees, the Booking.com SLC office has created a strong place identity for their growing team.



# Consulting Firm

Chicago Office - Chicago, IL

IA, Cushman Wakefield (Broker & PM) & Skender Construction

120,000 square feet

Haworth/AIS stations, OFS offices, Haworth task & conference seating, Stylex ancillary

BOS partnered with a business consulting firm to relocate their Chicago HQ to a premier, new construction office building along the Chicago River.

In the last two years, BOS has installed furniture for this client in (19) cities in the United States ranging from 120,00 square feet complete all new offices (Chicago) to providing remanufactured/new blended solutions for call centers in South Dakota, as well as decommissioning services for several offices throughout the United States. We have also partnered with the client to find resources for coordinating their new London, England and Utrecht, Netherlands locations.





# Akerman

Dallas Office - Dallas, TX

Staffelbach & The Spencer Company

27,277 square feet

Haworth, Davis, Datesweiser, Allseating,  
HBF, Allermuir, Keilhauer, Martin Bratrud,  
Cumberland

BOS partnered with Akerman LLP to expand their downtown Dallas office into an entire new floor in the Trammel Crow Center. The new space reflects a contemporary, professional aesthetic with 43 paralegal and attorney offices, 12 admin stations, 5 formal conference rooms, a cafe and a collaborative space with Haworth's Workware technology.

Akerman is a client-driven enterprise, recognized by Financial Times as among the most forward-thinking law firms in the industry.



*It's been our pleasure to work with the BOS team; from planning stage to installation - they gave their 100%. Their attention to detail and their willingness to go 'above and beyond' attitude has been outstanding at every turn of our projects. Our rep, Angel Shawver, has not only taken the time to listen to our needs, but has also provided feedback in areas where we can all improve as a collaborative team. Keep up the outstanding job BOS. We at Akerman truly appreciate it."*

**AKERMAN**



# Private Equity Firm

Corporate Headquarters - Chicago, IL

Gary Lee Partners

Haworth systems and offices, Touhy Conference tables/credenzas, Stylex conference chairs and ancillary products

BOS, the client, and their chosen A&D firm partnered to design & furnish a stunning contemporary interior with one goal in mind - "create a workspace you love!"

Our client is a Chicago-based private equity group focused exclusively on leveraged investments in middle market healthcare and life science companies.





# Fiskars

Corporate Headquarters - Middleton, WI

Kee Architecture

108,800 square feet

AIS, OFS, JSI, Allermuir and Urban Evolutions

BOS Holdings was hired to provide design and space planning services prior to furniture planning. We worked closely with Fiskars' Design Team and their partners to create a space that was reflective of Fiskars' great heritage. BOS Holdings then provided all furniture within the space, carefully selecting pieces that would be as classic as the orange handles on their scissors. We installed 268 workstations, 67 Private Offices, as well as furniture and soft seating for the Break Rooms, Training Rooms, Conference Room furniture, Labs and Mail Room. The result is a striking, timeless and functional workspace that Fiskars is thrilled to call home.

.....  
*"Jessica Pagel at BOS Holdings has successfully taken on this project and has yet allowed Fiskars to have full control of the outcomes. I know that this has been anything but a simple project, and having her as our partner has certainly made the entire process less daunting than I originally imagined. Jessica is truly an incredible professional and I have more than enjoyed the time well spent with her and BOS Holdings on this project."*

**EMILY LYLE, FISKARS**



# Suncoast Credit Union

Tampa, FL

Hepner Architects, Creative Contractors Inc., RiMO Photo

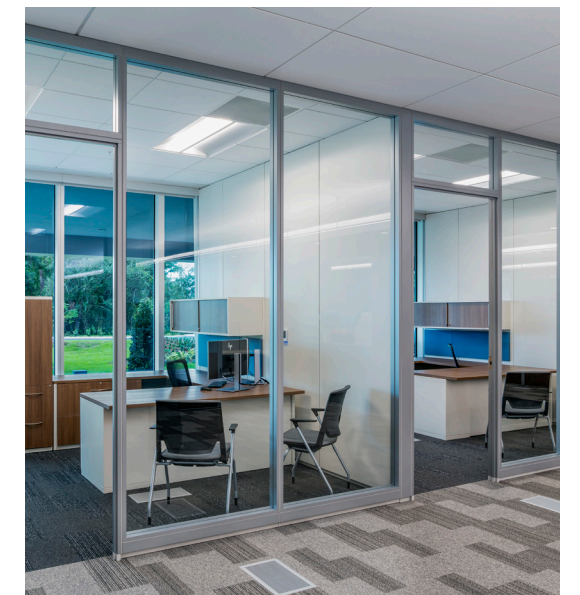
90,000 square feet

Haworth, Haworth Collection, Segis, ERG

Suncoast Credit Union has been a long-term partner of Haworth and our team, and because of that strong relationship our team understood how this new building's design should support their needs. Their business involves rapid growth and their primary focus is on facility performance to support their members. By utilizing a completely flexible build-out with Haworth's moveable walls, raised access flooring with HVAC and utilities underneath, and modular furniture pieces, their facilities team is able to re-organize and expand growing departments without affecting operations.

In addition, the circular lights in the stairwell and accent colors used throughout reinforce their re-branding and was a focus of the design team in the interiors. All team members in the building have access to daylight and views, along with a peaceful courtyard for rest and recharging during the workday.

All of this ties back to Suncoast's mission of improving the quality of their member's lives in building trust and respect, along with maintaining a strong and innovative credit union.



## MORE PROJECTS

01 WOLF POINT WEST  
CHICAGO, IL

02 WILTON BRANDS  
NAPERVILLE, IL

03 ILLINI CENTER  
CHICAGO, IL

04 FLORIDA DIGESTIVE SPECIALISTS  
ST. PETERSBURG, FL

05 COLLABORATE MD  
ORLANDO, FL

06 ACCESSO  
ORLANDO, FL

07 ORGANIC VALLEY  
CASHTON, WI

08 ENTERPRISE  
OAK BROOK, IL

09 RAILWAY SUPPLY GROUP  
ELMHURST, IL

10 MVP STAFFING  
DEERFIELD, IL

11 RUSH COPLEY  
AURORA, IL

12 HONEYWELL AEROSPACE  
CLEARWATER, FL

Take video tours of BOS workspaces and hear from our satisfied clients.

[VISIT OUR SHOWCASE PAGE](#)

[www.bos.com/showcase](http://www.bos.com/showcase)



# We Value Lasting Partnerships

BOS creates long-term value by developing positive client relationships, many of which have lasted 15 years or longer.



# EXTRAORDINARY EXPERIENCE

## FOR EVERYONE ON YOUR PROJECT TEAM

Your workspace is an investment in people and place - two of your most important assets. We are committed to serving both on this project. In addition to exceptional value, BOS delivers a robust set of curated services.



### Live Design Sessions

Take Part Creating Your Workspace



### Workspace Discovery Tool

Team Preference & Data Intelligence



### eProcurement Options

Making Ordering Easy



### Move Checklist

Your Guide To Remembering Everything



### Digital Space Calibration

Promote Culture and Manage Change



### On-Demand Customer Portal

Everything You Need... All In One Place



### Space Showcase

Celebrate Your Space Through Digital Media



### Sustainability Story

The Best Options for Your Old Furniture



### Discounted Warehousing

Preferred Rates for Storage



### Space Walk-Throughs

Furniture and Warranty Management



## & CURATED OPTIONS FOR EVERYONE AT YOUR ORGANIZATION



### Work from Home Programs

Our custom web stores make it easy to provide stipends, curated products & preferred pricing for your team members' home offices. Stores are branded, flexible, password protected & robust in their capabilities.



### Move-In Day Experience

Celebrate your space with an unforgettable first impression. You choose what makes the most sense for your team & we'll provide the rest!



### Listening Tools

From post-occupancy to pulse surveys, we'll provide custom and easy-to-implement tools that allow you to collect feedback, measure effectiveness & craft responses.



### Orientation Videos & Change Portal

From adjusting the task chair to operating a height adjustable table, we'll create custom videos & micro sites you can share with your team to ensure they feel comfortable & informed from day one.



INSPIRING  
WORKSPACES  
FOR OVER 75 YEARS

# IN HOUSE. IN CONTROL.

## QUICK STATS

- Celebrating over 75 years in business
- Haworth's 1st dealer partner
- Consistently in Haworth's top 10-15 dealers since 1948
- Consistently in AIS's top 1-3 dealers since 2005
- Receives Haworth's rare "Best in Class" distinction each year

## SOLID FINANCIALS

BOS is financially sound and consistently profitable, with offices in Illinois, Wisconsin and Florida.

## 360° SERVICES

Design, project management, decommissioning, installation: BOS is capable of doing everything in-house to minimize risk & maximize opportunity.

## SPECIALIZED TEAMS

To maximize every aspect of your move and your space, we are proud to offer specialized expertise, including in-house union installation, walls, digital marketing agency and technology integration.

## 100% EMPLOYEE OWNED

We are ESOP 100% employee-owned, so every employee has a vested interest in performing at the highest levels.



# NEXT STEPS

Our team of experienced workspace consultants are ready to discuss the latest workspace trends and technologies. No matter where you are in your space decision process, it is always valuable to stay tuned in.

If you would like a tour of any one of our locations, please don't hesitate to contact us. Also, please take advantage of our move checklist - your guide to remembering everything for your next move. Get your copy at [www.bos.com/checklist](http://www.bos.com/checklist).



BOSworkspaces



BOS\_workspaces



BOSworkspaces



BOSworkspaces

## CONNECT WITH US

[www.BOS.com](http://www.BOS.com)  
877.267.0267  
[info@bos.com](mailto:info@bos.com)

## HEADQUARTERS

501 South Gary Avenue  
Roselle, IL 60172  
877.267.0267

## CHICAGO

325 N Wells St STE 110,  
Chicago, IL 60654  
312.670.8530

## ORLANDO

200 Technology Park  
Lake Mary, FL 32746  
407.805.9911

## TAMPA

1600 E Eighth Ave. C-201  
Tampa, FL 33605  
813.549.7310