

# WORK INSPIRED

ENABLING BUSINESS SUCCESS BY CREATING  
WORKSPACES PEOPLE LOVE.

---





# ONE GOAL: CREATE A WORKSPACE YOU LOVE

- ▶ Full-Service Dealer to Minimize Outliers
- ▶ The Right Product Solutions for Your Workspace
- ▶ Consultants Who Listen & Deliver from the Start
- ▶ Up-front, Clear, Accurate Pricing
- ▶ A Long-Term Relationship





# EXPERIENCE MEANS EVERYTHING

## Your Experience Made Better Because of Ours

We know that refreshing your workspace is an important investment, and having furnished thousands of workspaces, the BOS team is uniquely qualified to make your experience the easiest it can be. BOS will guide you every step of the way and for years to come.



### EASY BUYING EXPERIENCE

Change made easy through customer portals, procurement options & powerful project reporting.



### VIABLE ALTERNATIVE GUIDANCE

Clear and understandable options. Purchase with confidence through deep discounting from 350+ leading manufacturers.



### AVOID POTENTIAL RISKS & PITFALLS

Trust an experienced guide with over seven decades furnishing thousands of workspaces.



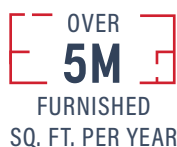
### WORK WITH EMPLOYEE OWNERS EVERY STEP OF THE WAY

Your experienced team will be supported by our entire organization. No one cares more about your success.



### UNIQUE & VALUABLE MARKET INSIGHTS

Receive unparalleled access to exclusive research, knowledge and tools.



**MADISON**

**MILWAUKEE**

**CHICAGO & ROSELLE**

**TALLAHASSEE**

**ORLANDO**

**TAMPA**

**NAPLES**

# MEMBERS OF THE BOS HOLDINGS FAMILY.



Having created thousands of inspiring workspaces for clients in corporate, government, higher education, healthcare, and hospitality, BOS is a Best in Class, Haworth Preferred Dealer with inspiration centers, offices and warehouses in Chicagoland, Orlando and Tampa, FL.



AOI offers the Midwest's largest inventory of new, used, and remanufactured office furniture, with an emphasis on Haworth furniture. AOI provides decommissioning, recycling and/or resale of BOS clients' pre-owned furniture. Offices and warehouses in Chicagoland, Milwaukee, and Madison.



Workspace Digital – a division of BOS – is the first full-service technology integrator and digital marketing agency in the commercial interiors industry.



Apex Interior Services is a leading Union office furniture installation firm. In addition to furniture installation, Apex does custom applications for cabinetry, trim work and creative interior elements that blend with the architecture of the space.

---

Learn more about BOS Holdings & locations:

**BOS HOLDINGS**

[www.bos-holdings.com](http://www.bos-holdings.com)

# WE LOWER YOUR RISK BY DOING EVERYTHING IN HOUSE

Only the employee owners at BOS can deliver a true 360° experience.

**360°**  
EXPERIENCE



## FURNISHINGS

---

- New, Used, & Refurbished
- 350+ Manufacturers
- Volume Discounting
- Home Office Programs

 [LEARN MORE](#)



## INSTALLATION SERVICES

---

- Union & Non-Union
- Professional Carpentry
- Multi-Manufacturer
- Architectural Solutions

 [LEARN MORE](#)



## WAREHOUSING

---

- 150,000 SFT Facility
- Climate Controlled
- Delivery & Receiving
- Long & Short-Term Storage

 [LEARN MORE](#)



## WORKSPACE CONSULTATION

---

- Workspace Strategy
- Budget Analyses
- Furniture Standards
- Cohesive Environment

[LEARN MORE](#)



## DESIGN SERVICES

---

- NCIDQ & LEED Professionals
- New Space Planning
- Office Reconfigurations
- Guaranteed Specs

[LEARN MORE](#)



## PROJECT MANAGEMENT

---

- Acknowledgement & Site Condition Reviews
- Timeline Management
- Product Orientation
- Punch-List Resolution



## DECOMMISSIONING & TRADE-IN

---

- Fleet of Trucks
- Decommissioning Specialists
- Resale & Blending Capabilities
- Trade-In Opportunities

[LEARN MORE](#)



## LEASING & RENTAL

---

- Short & Long Term Rentals
- Rent-to-Own Options
- Fair Market Price
- Haworth Payment Solution Leasing Program



## ASSET MANAGEMENT

---

- Asset Appraisals
- Inventory Management
- Warranty Management
- Product Maintenance
- Bar-Coding



## WALLS

---

- Walls Strategy & Consultation
- Dedicated Walls Team
- New Installations & Reconfigurations
- Manufactured in USA



## TECHNOLOGY INTEGRATION

---

- Audio Visual Solutions
- Sound Masking
- Digital Space Planning
- Sensors
- Collaboration Technology

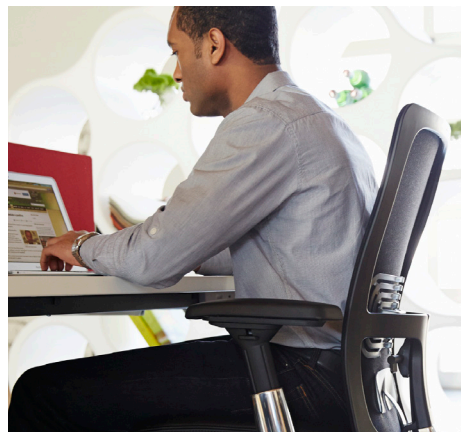
[LEARN MORE](#)



## CULTURE & CHANGE COMMUNICATION

---

- Work Culture Discovery & Promotion
- Space Tours & Showcases
- Workspace Signage & Branding
- Digital Marketing Agency



TEAM OWNERSHIP

KEY CONTACT



PROJECT DESIGNER



# PATH TO SUCCESS

proACT

**Combining People, Technology and Process to Deliver a Successful Integrated Project Deliverable.**

**LEARN MORE ABOUT OUR PROCESS | [WWW.BOS.COM/PROACT](http://WWW.BOS.COM/PROACT) ▶**

## 1 DISCOVER

The journey begins by listening and learning about your company's needs and culture. This is also where we define project requirements, develop timelines, and set Service Level Expectations.

### FEATURED TECHNOLOGIES

Compass Workspace Discovery, freespace, Yulio

## 2 GUIDE

Next, we'll be guiding you through the process of exploring layouts and furniture, often with the help of virtual renderings, 360° tours, and Design in Real Time.

### FEATURED TECHNOLOGIES

Bluescape, Canvas, Sketchfab

## 3 PREPARE

The 3rd step involves getting the space ready, confirming details such as building conditions, power locations, measurements, and doing zone tagging.

### FEATURED TECHNOLOGIES

Smartsheet, PlanGrid

## 4 PROCURE

Now it's time to order the product. We'll review acknowledgements for accuracy and ship dates and give you real-time access to all order documents.

### FEATURED TECHNOLOGIES

CORE Customer Portals, Service Dashboards

## 5 INSTALL

After verifying accuracy of the product, the installation begins, accompanied by daily progress reports. Afterward, trash is removed and – if applicable – old furniture is decommissioned.

### FEATURED TECHNOLOGIES

LYNX, IMS, MOSS

## 6 SERVE

The final step involves Day 2 site activation for product usage, warranty and maintenance programs, post occupancy surveys, custom customer portals with resources, eprocurement options, and more.

### FEATURED TECHNOLOGIES

CEROS, VIP Portals, Private Custom Websites

PROJECT COORDINATOR



INSTALLATION TEAM

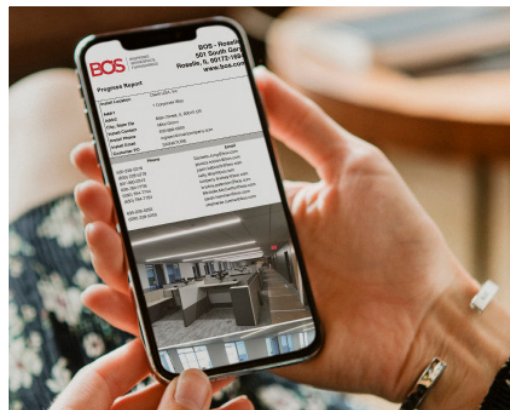
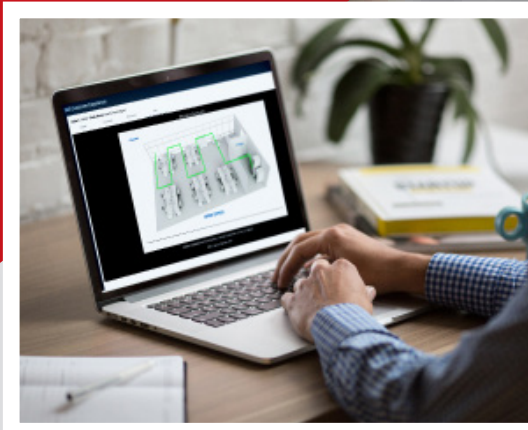
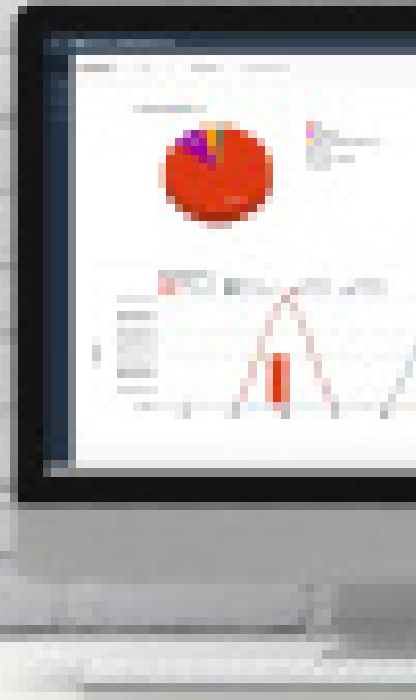


CUSTOMER SERVICE



# AT YOUR FINGERTIPS

## BOS CUSTOMER PORTAL



### ONLINE PORTAL

- Live Tracking
- On Demand Access
- Everything in One Place

### PROGRESS REPORTS

- Sent from Job site
- Visual Reports
- Proactive Email Communication

### PUNCHLIST RESOLUTION

- Faster Process
- No Human Error
- Easy and Efficient



The tried and true BOS proACT process is now powered by the industry's most cutting edge technologies to make the move and procurement process faster, smarter and more effective than ever before.

Real-time, instant access to proposals, active orders, service requests, invoicing, drawings, and data online and sent to your inbox so that you can stay in the know every step of the way.

**TAKE A TOUR**

[www.bos.com/PORTAL](http://www.bos.com/PORTAL)



# LIVE DESIGN

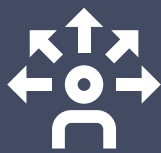


Take Part in The  
Creation of Your  
Workspace!

Industry-leading technology and the best designers in commercial interiors, Live Design by BOS offers speed, efficiency, confidence and savings in an immersive experience where clients and stakeholders collaborate in the space planning and furniture selection process.



Save Weeks  
On Your Next  
Workspace



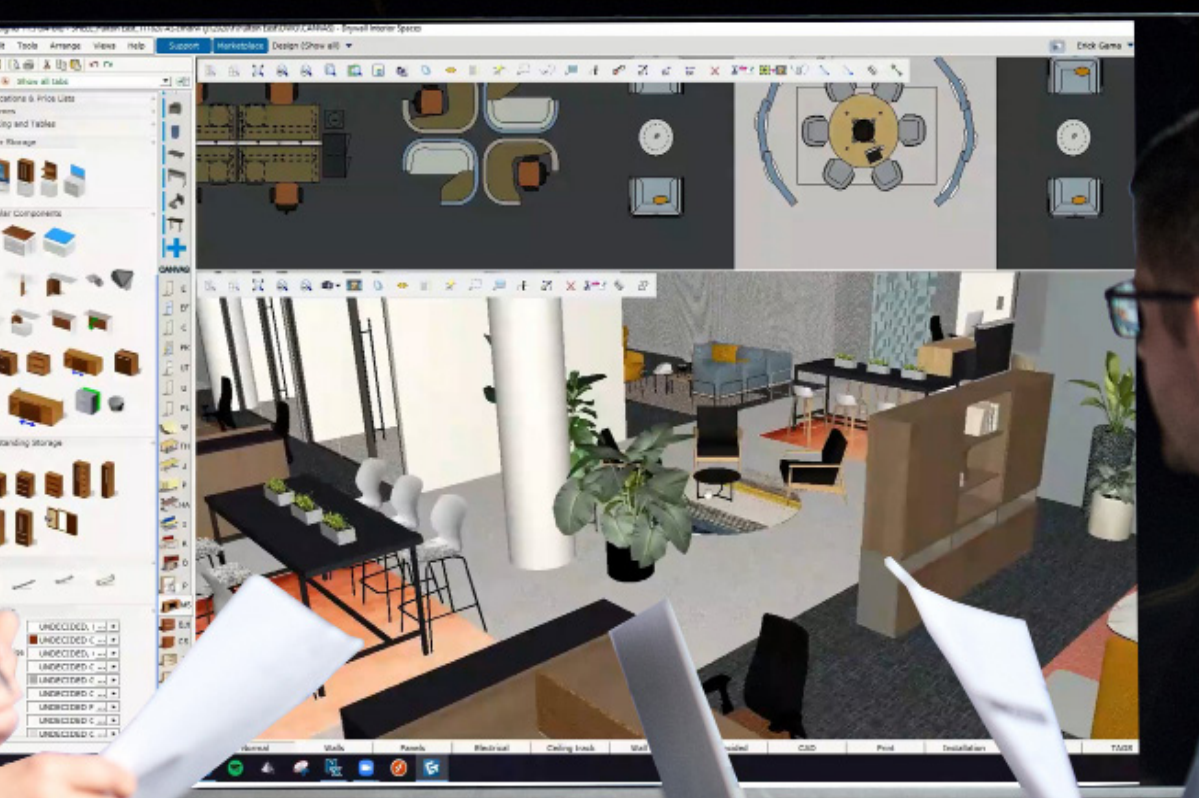
Informed  
Decisions in  
Real Time



In Person Or  
Remote Design  
Sessions



Work with  
A Design  
Professional



**Compare Styles,  
Colors & Options  
Instantly**



**Straight-Forward  
Product Pricing  
& Visibility**



**Realistic  
3D Space  
Visualization**



**Start A Live Design  
Session Today  
[www.bos.com](http://www.bos.com)**



# GET DIGITAL.

In the modern workplace, digital spaces promote culture, productivity, attraction and retention. Workspace Digital is the first full-service technology integrator and digital marketing agency in the commercial interiors industry. Align your physical and digital spaces today.

## TECH

Leverage our full service technology integration capabilities and connect your spaces and teams with the right solutions for your business.

- AV Consulting
- Asset Inventory
- Design & Engineering
- Video Conferencing
- Audio Solutions
- Wireless Charging

## AGENCY

From consulting and training to project-based and fully-managed solutions, Workspace Digital offers a full range of brand, marketing & creative solutions.

- Dynamic Websites
- Digital Signage
- Content Marketing
- Video & Photography
- Brand Identity
- And More

EXPLORE WORKSPACE DIGITAL

[WWW.WORKSPACE.DIGITAL](http://WWW.WORKSPACE.DIGITAL) ▶



**WORKSPACE  
DIGITAL**

# Sustainability is important to **our** mission.



Over **5.9 million pounds** of decommissioned office furniture have been diverted from landfills



Zero Waste to Landfill status globally since 2012.



BOS **recycles 500 tons of metal yearly** (1 metal scrap trailer weekly), as well as cardboard and white paper.



Packing from new product is reused to package/protect used product in our warehouse and during delivery.



BOS **sells 80% of the decommissioned furniture that is brought into our warehouse** out of our retail showroom floor.

BOS and Haworth have committed to setting an example and operating to ensure future generations are not compromised. Haworth, the industry leader in LEED solutions, is committed to offering greener products and services.

In addition to helping our clients create more sustainable spaces, BOS keeps countless workstations from going into a landfill by utilizing Affordable Office Interiors (our sister BOS Holdings company) for reselling and repurposing decommissioned furniture.



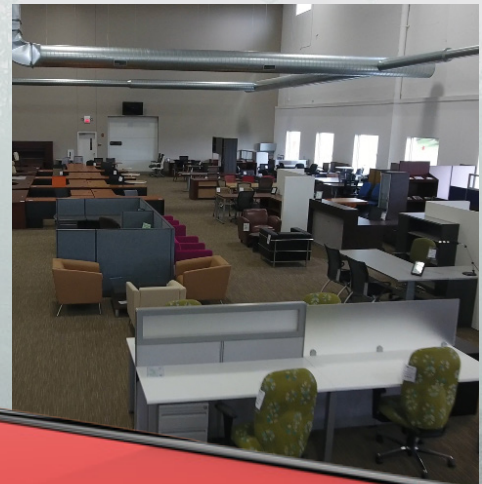
**LEARN ABOUT THE BOS SUSTAINABILITY CYCLE**

[www.bos.com/about/sustainability/](http://www.bos.com/about/sustainability/)



**VIEW HAWORTH'S 2020 CORPORATE RESPONSIBILITY REPORT**

2020 Sustainability Report



# WE'LL TAKE CARE OF YOUR EXISTING FURNITURE.

BOS In-House Decommissioning is part of our promise to deliver a 360° Experience, where you're provided maximum value and minimum risk through a turnkey solution that results in a complete, integrated project deliverable.

With a vast network of brokers, nationwide showrooms, and our new 200,000 square foot, climate-controlled warehouse in Roselle, IL, we can prevent most decommissioned furniture from going into a landfill.

- 200,000 Square Foot Climate Controlled Warehouse
- Fleet of Trucks in Illinois, Orlando and Tampa
- In-House Union and Non-Union Installation Teams
- Decommissioning Specialists On Staff
- Resale, Refurbishing and Blending Capabilities for Best Value
- BOS diverts between 4 and 5 thousand workstations or private offices (totalling over 1,380 tons) from landfills every year.

**LEARN MORE ABOUT BOS DECOMMISSIONING ›**

[www.bos.com/decommissioning](http://www.bos.com/decommissioning)



---

# UNPARALLELED BUYING POWER & PREFERRED PRICING

FROM OVER 350 OF THE WORLD'S  
TOP WORKSPACE MANUFACTURERS.



## MANUFACTURING PARTNERS

### SYSTEMS

AIS  
Haworth  
Inscape Paradigm  
Tayco

### CASEGOODS

AIS  
Bernhardt  
Darran  
Gianni  
Global  
Groupe Lacasse  
Halcon  
Haworth  
Indiana Furniture  
IOF  
JSI  
Krug  
Mobilia  
Nucraft  
National  
OFS  
Patrician  
Storlie Company  
Tuohy

### TASK SEATING

AIS  
9 to 5  
Allseating  
Chairworks  
Global  
Haworth  
Humanscale  
Keilhauer  
Krug  
National  
OFS  
Safco  
Sit On It  
Tayco  
United Chair  
Via  
Virco

### LIGHTING

Artemide  
Humanscale  
Light Corp  
Luxo  
Nessen

### LOUNGE & SEATING

9 to 5  
Allermuir  
Bernhardt  
Boss Design  
Brayton  
Cabot Wrenn  
Cassina  
Capellini  
Coalesse  
David Edward  
Davis  
EKO  
Encore  
Furniture Lab  
Global  
Groupe Lacasse  
Haworth Collection  
Halcon  
Haworth  
HBF  
ICF Group  
JSI  
Keilhauer  
KI  
Krug  
Lazyboy  
Martin Bratrud  
National  
OFS  
Poltrona Frau  
SitonIt  
Source International  
Stylex  
Thonet

### FILES & STORAGE

AIS  
Aurora  
DeskMakers  
Fireking  
Global  
Great Openings  
Groupe Lacasse  
Haworth  
Hollman Lockers  
Invincible  
KI  
Kwik File  
Office Specialty  
Safco  
Schwab  
Tennsco  
Virco

### TEXTILES & LEATHER

Arc-Com Fabrics  
Architex  
Bernhardt Textiles  
Carnegie  
CF Stinson  
DesignTex  
Garrett Leather  
HBF Textiles  
Knoll Textiles  
Luna  
Loom  
Maharam  
Mayer Fabrics  
Momentum  
Pallas  
Sina Pearson  
UltraFabrics  
Unika Vaev

### CONFERENCE & TRAINING

AIS  
Bernhardt  
Coalesse  
Davis  
Enwork  
Encore  
Falcon  
Furniture Lab  
Global  
Groupe Lacasse  
Halcon  
Haworth  
HBF  
Indiana Furniture  
JSI  
KI  
Krug  
Mobilia  
National Nevers  
Nienkamper  
Nucraft  
OFS  
Prismatique  
Safco  
Special T  
Surface Works  
Versteel

### SOUND MASKING

SMG

### ERGONOMICS

Conset  
Ergo Systems  
ESI  
Global  
Humanscale  
Intellaspaces  
Legrand  
Right Angle  
SpaceCo  
Workrite

### ACCESSORIES

Claridge  
Deflecto  
Doug Mockett  
Egan  
Magnuson Group  
Peter Pepper  
Safco  
Systems 290  
The Mail Store

### WALLS & FLOORS

Haworth AI

### TRADING FURNITURE

Nova  
R&D Data Products  
Safco

### HEALTHCARE

Brayton  
Carolina  
Cabot Wrenn  
David Edward  
Global  
Groupe Lacasse  
Haworth  
High Point  
Intensa  
IoA  
KI  
Krug  
LaZBoy  
Nemschoff  
Neocase  
Softcare  
Stance  
Thonet  
Wieland  
Unicell

# BOS LEADERSHIP

---

## George Pfeiffer

*CEO OF BOS HOLDINGS*

George leads by the BOS core values: Integrity. Inspiration. Commitment. He believes that if you do right by your clients, employees, and vendors, they will appreciate the relationship and the investment and will, in turn, do right by you. He ensures that his team embodies these values and that strong, long-term relationships are established with our clients.

---

## Georgia Dobbelaere

*PRESIDENT OF BOS*

Georgia Dobbelaere is dedicated to building outstanding client relationships by directing a team of hard-working, open, honest, fair and reliable workspace experts. Georgia leads the most experienced workspace dealer team in the industry and her commitment to professional excellence ensures she consistently delivers exceptional results for her clients.



## BOS ORLANDO



---

### **Olga Pagan**

*DIRECTOR OF CLIENT SERVICES*

Skilled, experienced and professional, Olga joined BOS Orlando in 2005. With her she brings industry experience from two major dealerships in Florida and is an expert at using our order tracking system and vendor relationships to make projects flow smoothly.



---

### **Mike Berry**

*MARKET VP / GENERAL MANAGER*

Mike's 18+ years of experience in operational management makes him uniquely suited to the logistics and coordination required to execute large and complex furniture installations. Keenly aware of the importance of responsiveness in today's business environments, Mike is an exemplary asset to customers we serve.





# WE VALUE LASTING PARTNERSHIPS



*The BOS team could not have been a better partner for our space move. Their services and expertise are unmatched. We would highly recommend them to anyone looking for a new workspace.”*

**AREA VICE PRESIDENT // FORTUNE 500 COMPANY**

Take video tours of BOS workspaces and hear from our satisfied clients.

[VISIT OUR SHOWCASE PAGE](#)

[www.bos.com/showcase](http://www.bos.com/showcase)



# We Value Lasting Partnerships



BOS creates long-term value by developing positive client relationships, many of which have lasted 15 years or longer.



SINCE 2020



SINCE 2010



SINCE 2008



8 YEARS



SINCE 2016



SINCE 2013



SINCE 1990



SINCE 2015



SINCE 2012



SINCE 2010



SINCE 1994



SINCE 2005



SINCE 1985



SINCE 1990



SINCE 2015



SINCE 2015



SINCE 2010



SINCE 2012



SINCE 2016



SINCE 2015



SINCE 2016

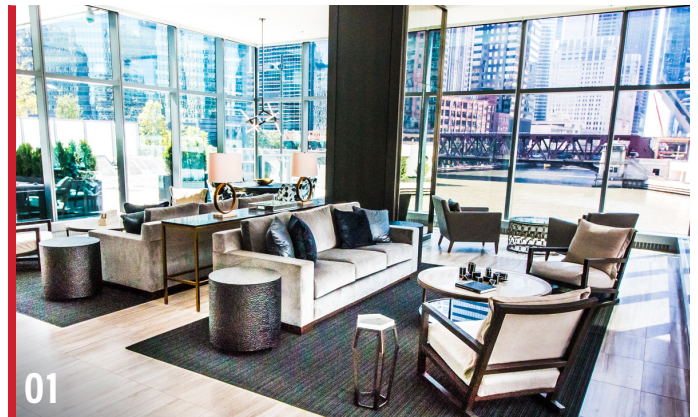
# PROJECTS

- 01 **WOLF POINT WEST**  
*Chicago, IL*
- 02 **WILTON BRANDS**  
*Naperville, IL*
- 03 **FLORIDA DIGESTIVE SPECIALISTS**  
*St. Petersburg, FL*
- 04 **MEDLINE**  
*Northfield, IL*
- 05 **ULTA BEAUTY**  
*Bolingbrook, IL*
- 06 **COLLABORATE MD**  
*Orlando, FL*
- 07 **ORGANIC VALLEY**  
*Cashton, WI*
- 08 **ENTERPRISE**  
*Oak Brook, IL*
- 09 **SCHNEIDER ELECTRIC**  
*Nashville, TN*
- 10 **AKERMAN**  
*Dallas, TX*
- 11 **RUSH COPLEY**  
*Aurora, IL*
- 12 **HONEYWELL AEROSPACE**  
*Clearwater, FL*

Take video tours of BOS workspaces and hear from our satisfied clients.

[VISIT OUR SHOWCASE PAGE](#)

[www.bos.com/showcase](http://www.bos.com/showcase)



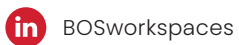
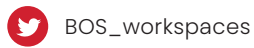




Be Inspired at [bos.com](https://bos.com)



CONTACT US | 877.267.0267 | [info@bos.com](mailto:info@bos.com)



**BOS ORLANDO**  
200 Technology Park  
Lake Mary, FL 32746  
407.805.9911

**BOS TAMPA**  
1600 East Eighth Ave, Ste C-201  
Tampa, FL 33605  
813.549.7310

**ROSELLE HEADQUARTERS**  
501 South Gary Avenue  
Roselle, IL 60172  
877.267.0267

**CHICAGO SHOWROOM**  
328 South Jefferson St, Ste 110  
Chicago, IL 60661  
312.670.8530