

HAWORTH

# Work from Anywhere

## Third Place Playbook



# Third Place

Third places provide opportunities to get away from the distractions of home and office. These dynamic environments also help to fuel the creative process. Third places offer a more casual space to meeting with others as well as a spot to stop, work, and interact while traveling or on the go.

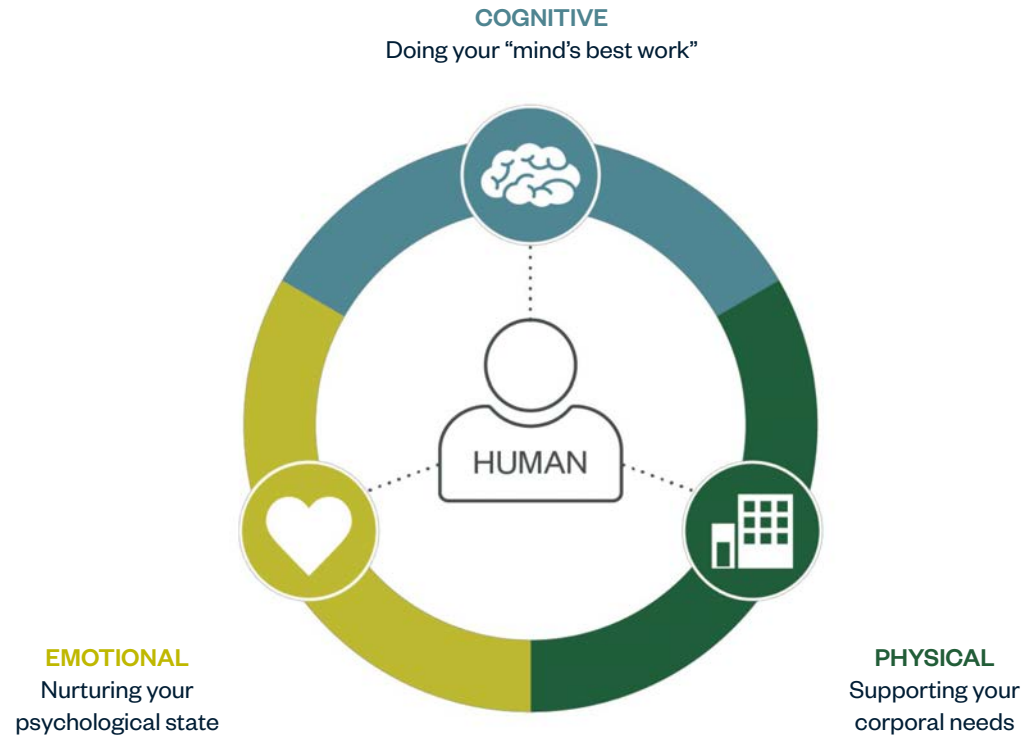
They are alternative spaces when office occupancy is at capacity and home is not the best option for the work required. Third places provide access to others, in a different atmosphere that sparks creativity, enhances connection, and fosters a sense of belonging.



# Enhance Human Performance

When people feel strong emotionally, they tend to manage the stressors of everyday life and recover more quickly—oftentimes leading to an ability to cognitively process information better. Our studies identified 10 Affordances vital to human performance.

To create a work experience that nurtures well-being, the Affordances that relieve stress and provide security will take precedence when people are challenged with new ways of working.



## 10 Affordances to Support Human Performance

### Cognitive

- **Embedding** – Opportunities to place and retain appropriate mnemonic artifacts
- **Externalization** – Options for creating, recording, and expressing thoughts within the physical environment
- **Access** – The means to gather, organize, store, and retrieve information
- **Insulation** – The means to manage both irrelevant and meaningful stimuli

### Emotional

- **Authenticity** – Familiar, meaningful, and engaging surroundings
- **Well-being** – A sense of personal control and safety
- **Affinity** – A feeling of connectedness with coworkers and others

### Physical

- **Anthropometrics** – Furniture, fixtures, and spaces suitable to the worker's physical characteristics
- **Ambient(s)** – Healthy and supportive (appropriate) environmental conditions.
- **Movement** – Various opportunities to change posture, position, and location

# Space Types

### Coffee Shop / Café Spaces

Low Amenity - spaces that allow for gathering over food or drinks.



### Lobby / Common Spaces

Medium Amenity - retreats, lobbies, and common spaces to accommodate activities alone or together.



### Community Work Hubs

High Amenity - spaces supported by tools that enhance interaction and collaboration.



# Coffee Shop / Café Space 1



# Coffee Shop / Café Space 1



## Affordances Demonstrated

- Insulation – the buzz of the café helps support focus work
- Well-being – provides opportunity for recovery (food)
- Affinity – provides a sense of connection to others in a casual space

## Key Products

- LC5 Lounge
- BuzziBooth
- Newood Dining Chair
- Jive Disc Base Table
- BuzziSol Lighting
- BuzziMilk Stool

This hospitality-centric café space focuses on meaningful connections, enabling choice in enclosure—bring your own device and relax with a cup of coffee.

## Coffee Shop / Café Space 2



# Coffee Shop / Café Space 2



## Affordances Demonstrated

- Well-being – provides opportunity for recovery (food)
- Authenticity – the screen suggests less interruption than other spaces
- Affinity – provides a sense of connection to others in a casual space

## Key Products

- Hobo Sofa
- Resonate Upholstered Guest Chair
- BuzziDesk
- BuzziDesk FlipFlop
- Jive Disc Base Table
- Bong Side Table
- BuzziMilk Stool
- Bola Disc Wall Lighting
- BuzziShade Lighting

Provides space for individual short-term work and other spaces for two to three people to meet casually. Bar area offers the perfect place to check email or chat with others will waiting.

# Coffee Shop / Café Space 3



# Coffee Shop / Café Space 3



## Affordances Demonstrated

- Well-being – provides opportunity for recovery (food)
- Affinity – provides a sense of connection to others in a casual space
- Authenticity – booths and lighting signal a set-aside space for work or conversation

## Key Products

- Cabana Lounge Seating
- Pip Collaborative Table
- Tate Color Low Back Stool
- PopUp Table
- Tate Color Chair
- Jive Disc Base Table
- Immerse Ledge Table

The stimuli and vibe happening within this hospitality space support creative focus activities. Specifically, the booths make this space more intentional for work.

# Coffee Shop / Café Space 4



# Coffee Shop / Café Space 4



Outdoor space with energy provides the perfect atmosphere for lively conversation or just relaxing while reading alone.

## Affordances Demonstrated

- Authenticity – provides a break or retreat from heavy tech work
- Well-being – views of nature and being outside help with recovery
- Movement – various spaces for interactions

## Key Products

- Gigi II Seating
- Bell Side Table (by JANUS et Cie)
- Fenc-e Nature Armchair (by Cassina)

# Coffee Shop / Café Space 5



# Coffee Shop / Café Space 5



This space provides visual interest and a variety of areas for working alone or interacting with a colleague to review or plan.

## Affordances Demonstrated

- Authenticity – a break or retreat from heavy tech work
- Affinity – provides connection to others in a casual setting
- Movement – provides options for different postures and work settings

## Key Products

- LC7 Outdoor Seating (by Cassina)
- LC6 Outdoor Table (by Cassina)
- Sail Out Sofa (by Cassina)

# Coffee Shop / Café Space 6



# Coffee Shop / Café Space 6



## Affordances Demonstrated

- Authenticity – the three distinct zones are demonstrated by the use of flooring and lighting
- Well-being – views of nature and being outside help with recovery
- Movement – provides options for different postures and work settings

## Key Products

- Sail Out Sofa (by Cassina)
- Nexus Barstool (by JANUS et Cie)
- JANUS Titan Umbrella

Deeper connection to nature enables a good balance if interfacing with digital technology. Views provide opportunities for restoration.

# Space Types

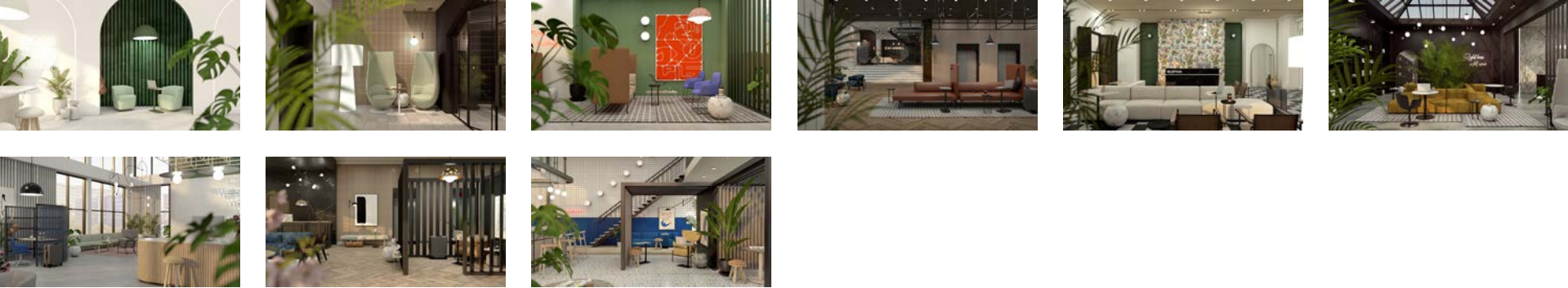
## Coffee Shop / Café Spaces

Low Amenity - spaces that allow for gathering over food or drinks.



## Lobby / Common Spaces

Medium Amenity - retreats, lobbies, and common spaces to accommodate activities alone or together.



## Community Work Hubs

High Amenity - spaces supported by tools that enhance interaction and collaboration.



# Lobby / Common Space 1



# Lobby / Common Space 1



A cozy nook adjacent to this transitional space offers privacy for interaction or a touchdown area while waiting for others.

## Affordances Demonstrated

- Well-being – the nook's orientation provides security
- Authenticity – clearly provides a space for two people to connect
- Ambients – acoustically surrounded for some privacy

## Key Products

- Orla Seating
- Pip Personal Laptop Table
- BuzziMilk Stool

# Lobby / Common Space 2



# Lobby / Common Space 2



## Affordances Demonstrated

- Well-being – orientation of architecture and furniture provide security
- Affinity – provides a place for two to connect
- Ambients – the Wanders' Tulip chairs provide acoustical qualities

## Key Products

- Wanders' Tulip Chair
- Pip Personal Laptop Table
- Bong Side Table
- Big Shadow Lighting (by Cappellini)

Use this transitional space to support a quick connection with your smartphone or to have a quiet conversation. It is also a comfortable space for waiting or making a call.

# Lobby / Common Space 3



# Lobby / Common Space 3



## Affordances Demonstrated

- Insulation – provides a set-back area that decreases distraction
- Affinity – provides a space for a small group to connect

## Key Products

- Cabana Lounge Sofa
- Poppy Guest Chair
- Torei Table
- Bong Side Table
- Mangas Rug

This transitional space supports a quick touch-down or waiting area. The back of the sofa and location provide a sense of security.

# Lobby / Common Space 4



# Lobby / Common Space 4



## Affordances Demonstrated

- Insulation – Cabana Lounge panels provide individual area distinction
- Authenticity – the space defines quick touchdown zones
- Movement – various spaces for solo work

## Key Products

- Cabana Lounge Island
- Pip Personal Laptop Table
- Torei Table
- Swell Pendant Lighting
- Back-Wing Armchair
- Gong Side Table
- Bong Side Table
- Wanders' Tulip Chair

All about convenience, this space is set up well for checking emails or a quick task while waiting for others. It accommodates individual activities rather than group interactions.

# Lobby / Common Space 5



# Lobby / Common Space 5



## Affordances Demonstrated

- Authenticity – Larkin tables signal where laptop use is acceptable
- Affinity – provides places for interaction
- Movement – various spaces for solo work or interaction

## Key Products

- Mex Cube Seating (by Cassina)
- LC1 Lounge Chair
- Larkin Personal Laptop Table
- Bong Side Table

This reception space encourages a slightly longer stay to make a connection, although mainly accommodates short-term activities and easy access to others if needed.

# Lobby / Common Space 6



# Lobby / Common Space 6



Vibe is the key word for this space with bookshelves and an area for individual work. The quiet energy sets the stage for the perfect place to recharge.

## Affordances Demonstrated

- Authenticity – layers of opportunities for interactions provided by the plants and furniture
- Affinity – provides places for interaction
- Well-being – inspiring space with tall ceilings and skylights

## Key Products

- Mex Cube Seating (by Cassina)
- Wanders' Tulip Chair
- Juli Plastic Armchair
- Jive Disc Base Table
- Bong Side Table
- Mangas Rug

# Lobby / Common Space 7



# Lobby / Common Space 7



## Affordances Demonstrated

- Well-being – inspirational views, artwork, and expansive space draw people into the space
- Affinity – provides places for interaction
- Insulation – the BuzziBracks provides auditory access to the buzz, but blocks visual distraction

## Key Products

- LC5 Lounge Seating
- BuzziBracks Workspace
- Poppy Guest Chair
- BuzziMilk Bench
- Bola Disc Light
- Bong Side Table
- BuzziMilk Stool
- Diagonales Rug

Views outside enable a connection to the location and opportunities for restoration. The desk provides the option for slightly longer duration and insulation implies availability to be interrupted.

# Lobby / Common Space 8



# Lobby / Common Space 8



## Affordances Demonstrated

- Insulation – provides areas for individual and group focus
- Well-being – provides user control with many options on where to work
- Authenticity – legible cues with rugs, Larkin laptop table, and Pergola workspace signaling where work happens

## Key Products

- Pergola Workspace (Available Q1 2021)
- Archibald Lounge Chair
- Manforte Bench
- Bong Side Table
- Torei Table
- Pip Personal Laptop Table

Lighting and light architecture help with the legibility of potential work areas. A freestanding sub-architectural workspace supports a sense of privacy without complete enclosure.

# Lobby / Common Space 9



# Lobby / Common Space 9



## Affordances Demonstrated

- Well-being - provides user control with many options on where to work
- Affinity - provides space for small groups to meet
- Movement- provides amenities in different areas to encourage movement in the space

## Key Products

- Pergola Workspace (Available Q1 2021)
- BuzziMilk Stool
- Jive Disc Base Table
- Bong Side Table
- Larkin Personal Laptop Table
- Newood Stool

This space offers amenities like food and beverages for more longer-term opportunities and a variety of connections.

# Space Types

## Coffee Shop / Café Spaces

Low Amenity - spaces that allow for gathering over food or drinks.



## Lobby / Common Spaces

Medium Amenity - retreats, lobbies, and common spaces to accommodate activities alone or together.



## Community Work Hubs

High Amenity - spaces supported by tools that enhance interaction and collaboration.



# Community Work Hub 1



# Community Work Hub 1



Rich in work amenities, this space supports longer-term work activities, including a variety of options for focus work.

## Affordances Demonstrated

- Insulation - provides areas for individuals to do focus work
- Well-being - provides user control with options on where to work
- Affinity - provides space for small groups to meet

## Key Products

- Tate Color Chair
- Planes Disc Base Table
- Pop Up Table
- Tate Low Back Stool
- Bong Side Table
- Chick Pouf
- BuzziSol Lighting
- Bola Wall Light

# Community Work Hub 2



# Community Work Hub 2



## Affordances Demonstrated

- Well-being – the booths provide security
- Access – the monitors provide access to information or potentially virtual conversations
- Affinity – the variety of spaces encourage interaction

## Key Products

- Orla Seating
- Pip Personal Laptop Table
- Bong Side Table
- Cabana Lounge
- Pip Collaborative Table
- BuzziSpot Pouf
- Bola Pendant Lighting
- BuzziShade Lighting
- Mex-Hi Sofa

This space is a great place to share information in a casual setting. It supports meeting with coworkers or clients to discuss, plan, and finalize information.

# Community Work Hub 3



# Community Work Hub 3



With a variety of areas to accommodate individual and group work—each with its own level of visual distraction—this space offers autonomy and choice. The bar supports quick connections and casual postures. For more formal work, sign-out technology allows reservation via a concierge.

## Affordances Demonstrated

- Authenticity – rugs and architecture provide areas for connection and work
- Well-being – multiple booths provide security with orientation to the group spaces
- Movement – various spaces for solo or group work

## Key Products

- BuzziSol Lighting
- Planes Disc Base Table
- BuzziSpot Pouf
- Bong Side Table
- Pip Collaborative Table
- Orla Seating
- Mex-Hi Sofa
- Torei Table
- Tate Low Back Stool
- Cultivate Table
- Bluescape Easel
- Diagonales Rug

# Community Work Hub 4



# Community Work Hub 4



## Affordances Demonstrated

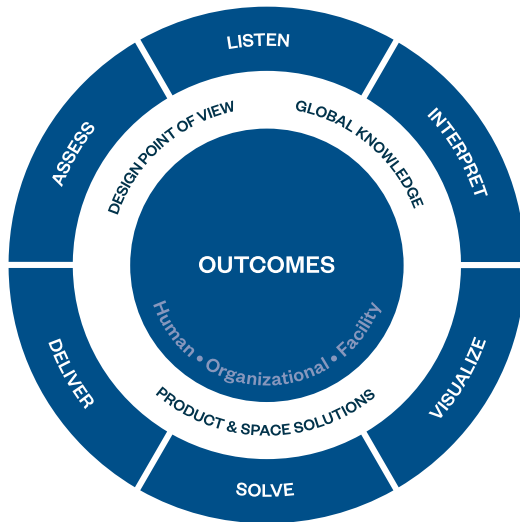
- Insulation - provides areas for individual and group focus
- Well-being - provides user control with many options on where to work
- Affinity - provides space for small groups to meet

## Key Products

- Soji Task Chair
- BuzziShade Lighting
- Bluescape Easel
- Harbor Work Lounge
- Chick Pouf
- Pergola Workspace (Available Q1 2021)
- Planes Disc Base Table
- Orla Seating
- Bong Side Table
- Lana Light

This work hub provides amenities similar to what would be in an office. With both open areas and retreat spaces, it is easy to find the right spot for the task at hand.

ORGANIC WORKSPACE



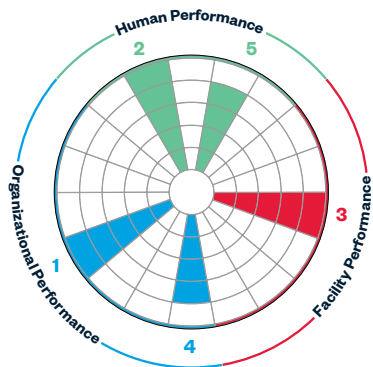
# Haworth Expertise

Haworth's Organic Workspace helps align your people and space for optimal performance. Using our unique perspective and process, we assist you with knowledge-based solutions. We'll explore with you the right balance for your ecosystem to accommodate a continuous flow of work in multiple environments. Our goal is to help your people be effective and make the most out of your real estate investment.

## Want to learn more?

Get more in-depth information by visiting [haworth.com](http://haworth.com).

LISTEN .....→ INTERPRET .....→ VISUALIZE & SOLVE



**EMOTIONAL**  
Nurturing your psychological state

**PHYSICAL**  
Supporting your corporal needs



HAWORTH® is a registered trademark of Haworth, Inc.

© Haworth, Inc. All rights reserved. 2020 11.20

[haworth.com](http://haworth.com) | 800 344 2600