

Know Your Space? Understand Your Investment.

freespace

Freespace gives you insight into your environment by monitoring employee engagement and activity by using patented multisensory technology. It provides live results based on real analytics throughout your space allowing you to see which areas are being utilized and which areas are being wasted.

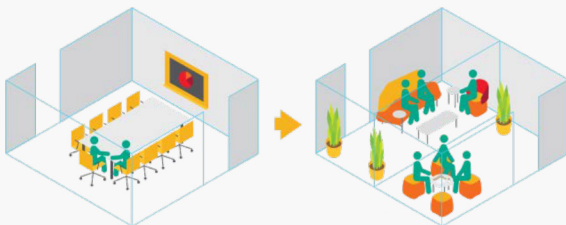


The best workplaces are the ones that respond to their users and provide effective spaces that compliment their workstyle.

Today's business climate is constantly changing.

The rate of change is increasing, and business success requires quick adaptation to ensure company resources are aligned with business needs. This kind of rapid workspace evolution requires systems that can easily adapt to allow employees to achieve their best work. However, the workspace itself is often static and inhibits quick adaptation.

With flexibility in the workplace today. It vital to understand if the investments in the workplace are being utilized or inhibiting your environment.



Identifying underutilized spaces presents an opportunity to transform the environment and bring new life to the space. A low occupancy conference room could be reconfigured into two smaller spaces for more relaxed, collaborative meetings.



Simple Setup

Each preprogrammed sensor easily adheres to the designated mountable surface. A simple on switch signals the sensors and relays all information wirelessly to the central network where it will gain analytics in the environment. No wires necessary.



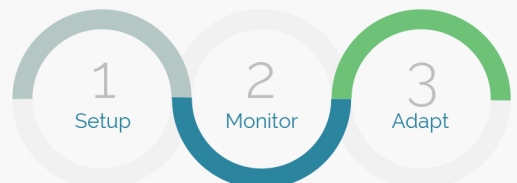
Enhanced Monitoring

Each sensor can be customized to track heat, motion, climate, humidity, or light. The data is then transferred back and can easily be accessed online or through an app to give you live data as it happens. Information can be reported by availability, durations, user quantity, departmental, location, and by time.

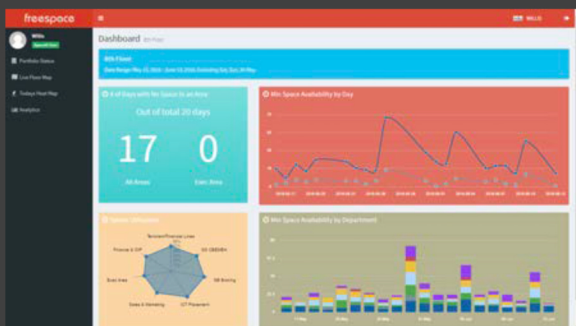


User Interface

Through digital signage or app, users can view which spaces are available for use at any given time through any space equipped with freespace. Freespace's system can also be integrated with a majority of room booking services, allowing users the ability to book spaces from any location.



Know which spaces circulate the most. Understand which spaces allow teams to function better. Make sure spaces are being utilized properly.



Workplace Analytics

Freespace's analytic dashboard gives you access to information collected from your environment. It can be arranged to show the information based on your need to give you an accurate assessment of which spaces are being utilized. From here, you can begin understanding your space and the investments you've made and make informed decisions on any future changes.

Deeper Insight

Each dashboard can be further expanded giving you deeper insight of activity for each sensor placed throughout your space. A quick snapshot will give you information regarding location, duration of use, user quantity, and activity. Sensors can also be designated based on department and room type allowing departments to make strategic decisions on estate performance, restacking or re-planning a space.

Customization

Freespace's user interface can be customized to fit your environment. From here, individuals or teams can receive instant information on what areas are available for use and help with wayfinding. When integrated into a room manager system, users can then be able to book spaces from any interface.